

RESOLUTION NO. 13 – 2168

RESOLUTION OF THE TOWN COMMISSION FOR THE TOWN OF SURFSIDE, FLORIDA AWARING A BID TO LYNX CONSTRUCTION LLC FOR 95TH STREET END IMPROVEMENTS SUBJECT TO CERTAIN CONDITIONS; AUTHORIZING ADDITIONAL FUNDS FOR THE PROJECT IN THE AMOUNT OF \$60,000.00 FROM THE STORMWATER FUND RESERVES AND THE REMAINING BALANCE OF \$61,466.84 TO BE CHARGED TO THE CAPITAL IMPROVEMENT FUND; PROVIDING FOR AWARD, APPROVAL, AND AUTHORIZATION; PROVIDING FOR AN EFFECTIVE DATE.

WHEREAS, the Town Commission has approved four development agreements that provide for landscape, hardscape and aesthetic improvements to street ends (Collins Avenue east to beach) at 95th Street; 94 Street; 92nd Street and 90th Street; and

WHEREAS, voluntary proffers totaling \$375,000 have been made by the developers Grand Beach Hotel and the 9501 Collins Project for said street end improvements to 95th Street prior to the bid process; and

WHEREAS, in Resolution No. 12-2093 the Town Commission approved the selection of Bermello Ajamil (BMA) to design improvements for 95th Street; and

WHEREAS, the Town Commission selected the design “look” for the project during the August 25, 2012 Town Commission Meeting; and

WHEREAS, in addition to the aesthetic improvement to 95th Street, the new design will incorporate a valley gutter storm drain system with crutch basins to improve the roadway’s drainage system; and

WHEREAS, on April 19, 2013 the Town of Surfside accepted and opened bids for the 95th Street Improvements; and

WHEREAS, the Town received bids from six (6) construction companies: KVC Construction, West Construction, ABC Construction, Inc., Construction Group Corporation, Williams Paving and Lynx Construction, LLC; and

WHEREAS, after the review by the Selection Committee and the Town Manager of all proposals submitted, they recommended Lynx Construction LLC who submitted the lowest bid for the design project; and

WHEREAS, it is in the best interest of the Town to authorize the expenditure for the 95th Street end project in accordance with the bid received from Lynx Construction LLC and to expend additional funds for the project in the amount of \$60,000.00 from the Stormwater Fund Reserves and the remaining balance of \$61,466.84 to be charged to the Capital Improvement Fund. (See Attached Commission Communication dated June 11, 2013 “Approval and Award of Contract to Lynx Construction for 95th Street Improvements from Collins Avenue East to the Beach”).

NOW, THEREFORE, BE IT RESOLVED BY THE TOWN COMMISSION OF THE TOWN OF SURFSIDE, FLORIDA, AS FOLLOWS:

Section 1. Recitals. The above stated recitals are hereby adopted and confirmed.

Section 2. Approval, Award and Authorization. The Town Commission approves and authorizes the Town Manager and/or his designee to take all actions necessary to award a contract to Lynx Construction LLC in the amount of \$401,466.84 subject to receiving all necessary permits and finalizing the voluntary proffers totaling \$375,000 for the 95th Street improvements. The Town Manager is authorized to expend additional funds for the project in the amount of \$60,000.00 from the Stormwater Fund

reserves and the remaining balance of \$61,466.84 to be charged to the Capital Improvement Fund. (See Attached Commission Communication dated June 11, 2013 “Approval and Award of Contract to Lynx Construction for 95th Street Improvements from Collins Avenue East to the Beach”).


Section 3. Effective Date. This Resolution shall take effect immediately upon adoption hereof.

PASSED and **ADOPTED** on this 11 day of June 2013.

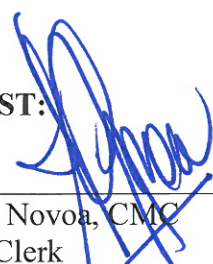
Motion by Commissioner Graubart, Second by Commissioner Olchyk.

FINAL VOTE ON ADOPTION

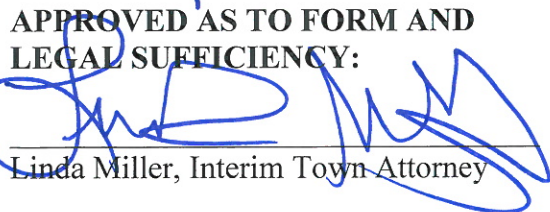
Commissioner Joseph Graubart	YES
Commissioner Michelle Kligman	YES
Commissioner Marta Olchyk	YES
Vice Mayor Michael Karukin	NO
Mayor Daniel Dietch	YES



Daniel Dietch, Mayor

ATTEST:


Sandra Novoa, CMC
Town Clerk

APPROVED AS TO FORM AND LEGAL SUFFICIENCY:


Linda Miller, Interim Town Attorney



Town of Surfside Commission Communication

Agenda Item#:

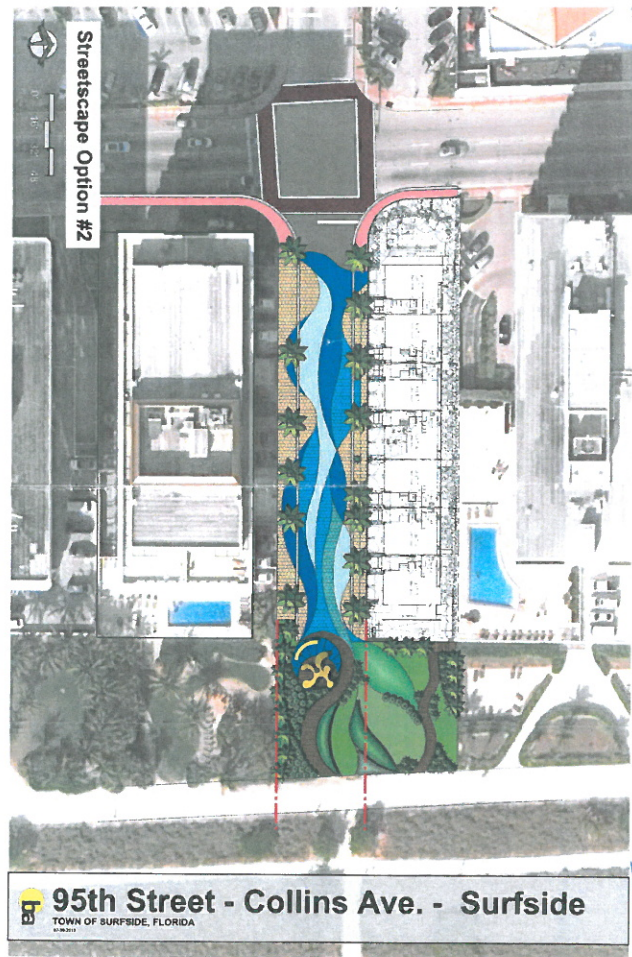
Agenda Date: June 11, 2013

Subject: Approval and Award of Contract to Lynx Construction for 95th Street Improvements from Collins Avenue East to the Beach

Background: As part of the Town of Surfside's ongoing efforts to upgrade and beautify public facilities, the Town Commission has supported the upgrading/beautification of several street ends leading to the beach (from Collins Avenue) by including the street end improvement projects in several development agreements. A substantial portion of these projects are to be funded through voluntary proffers.

Currently, four street ends (95th, 94th, 92nd and 90th Streets) have been included in development agreements for improvements. 95th Street improvements will be the first street end project undertaken through the development agreements/voluntary proffers. [Note: The other three projects include an amount from the Chateau development not to exceed \$400,000 for 94th Street improvements including landscape, hardscape and streetscape improvements; \$7500 voluntary proffers from the Marriott/Residence Inn to upgrade the public beach access at the 92nd street end; and an amount not to exceed \$400,000 from the Surf Club for the 90th Street End Project that includes landscape and streetscape improvements. Surf Club representatives have indicated they are considering electing the development agreement option for their company to perform the improvements on 90th Street].

Analysis: This project will provide significant benefits and improvements for the Town. 95th Street will experience an improved drainage system as well as an aesthetically pleasing paver system roadway. 95th Street currently does not have an adequate drainage system in place. This project will consist of a valley gutter storm drain system with catch basins to collect runoff for a positive out fall of storm water during a rain event. The roadway will be altered to a design elevation matching the new and existing structures on both sides of 95th. This will provide a smooth and safe transition from the roadway for ingress and egress to the properties. BMA was the design Architect for this project.



Project limits are outlined on the enclosed street map. During the design process, the decision was made to apply for a FDEP permit for the street portion only (area highlighted in yellow on the street map). To have included the beach area (highlighted in orange) realistically could have added a substantial period of time (perhaps up to a year) to the permitting process. The 95th Street improvements will include drainage, seven planters on the north side, one planter on south side, street lights, lighted bollards, and paver roadway with valley gutters.

Bids were accepted and opened on April 19, 2013 outlined from lowest to highest as follows:

1. Lynx Construction	\$486,898.84
2. Williams Paving	\$538,390.78
3. Construction Group Corp	\$572,939.70
4. ABC Construction, Inc.	\$580,226.38
5. West Construction	\$586,732.56
6. KVC Construction	\$756,424.00

The above bids include the 95th Street improvements (\$401,466.84; yellow highlighted area) and the beach area (\$85,432; orange highlighted area). Enclosed is the bid tabulation sheet prepared by BMA.

Budget Impact: The following is the cost to complete the 95th Street End Improvements:

I. Project Cost:

• Bid	\$401,466.84
• Professional Fees	\$75,000.00
• 5% Permit Contingency/ <u>Construction Management</u>	\$20,000.00
TOTAL:	\$496,466.84

II. Voluntary Proffers:

• Grand Beach	\$225,000
• <u>9501 Project/Greystone</u>	\$175,000
TOTAL:	\$400,000

[Note: Development Agreements provide for \$350,000 of the above voluntary proffers. Former Town Manager Roger Carlton received an additional \$25,000 commitment from both the Grand Beach and 9501 Project/Greystone (Ryan Shear). These additional commitments have been confirmed and will be a condition of the award and finalized prior to contract signing with the successful bidder].

III. Funding:

• Project Cost:	\$496,466.84
• <u>Voluntary Proffers</u>	-\$400,000.00
TOWN PORTION:	\$96,466.84

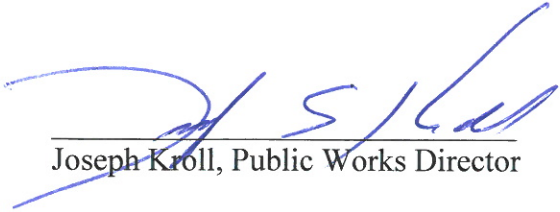
Town portion recommended to be funded by \$60,000 from the Storm water reserves for the drainage/gutter improvements and \$36,466.84 from the Capital Improvement Fund.

IV. Beach Area:

The improvements to the Beach area (\$85,432) are not included with this award as the permits have not been submitted to the permitting agencies. 9501 Project/Greystone (Ryan Shear) has offered an additional \$25,000 to the Town to assist in funding this cost in the future. This will be memorialized in a Memorandum of Understanding.

Staff Impact: Current Public Works Staff (Public Works Director Joseph Kroll and Special Projects Manager Randy Stokes) will be the project manager for the construction thus substantially reducing professional/consulting construction management and inspection services.

Recommendation: Adopt enclosed Resolution awarding the bid for the 95th Street End Project to Lynx Construction in the amount of \$401,466.84 (deleting all improvements east of the bulkhead/seawall) subject to the authorization and conditions listed in the Resolution.



Joseph Krill, Public Works Director



Michael P. Crotty, Town Manager

MPC/dh



PROJECT OWNER
 TOWN OF SURFSIDE, FL
 9393 HARDING AVENUE
 SURFSIDE, FLORIDA 33154



PROJECT NAME
**95th STREET STREETSCAPE
 IMPROVEMENT PROJECT**

PROJECT LOCATION
**95th STREET EAST OF SR
 AYACOLLINS AVENUE IN
 SURFSIDE, FLORIDA**

SUBCONSULTANT INFORMATION

PROFESSIONAL SEAL

Michael A. Jamil
 Florida Registered Landscape
 Architect No. LA00029790

SUBMITTAL DESCRIPTION

BIDDING
 February 15th, 2013

REVISIONS

Project No. 12075.000
 Scale 1" = 16' H20
 Date October 22, 2012
 Drawn KJD
 Checked RPH
 CADD File

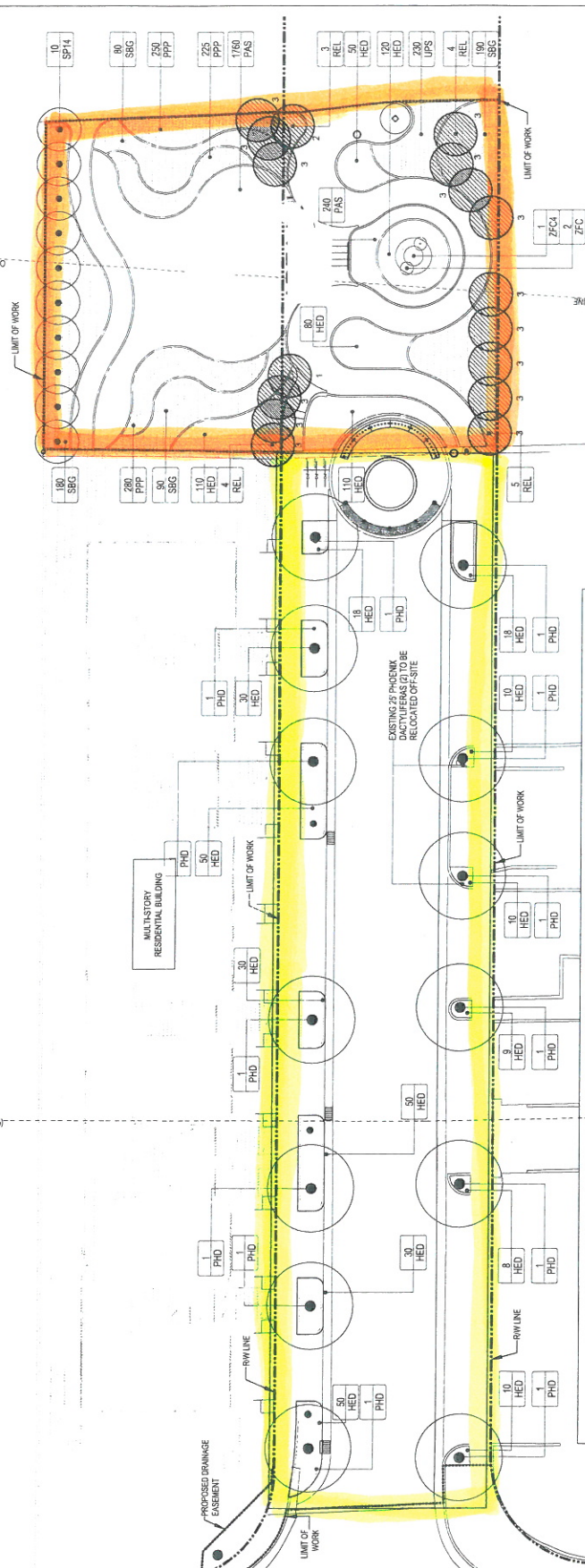
DRAWING TITLE
**LANDSCAPE
 PLAN**

SHEET NO

LL-1

PLANTER INSTALLATION NOTES

- AFTER THE ROAD IS BUILT, PLANTERS ARE INSTALLED AND WATER CURBE BUILT. PLANTERS ARE TO BE INSTALLED AT POINTS INDICATED AND SPACING TO A MINIMUM OF 10 FEET. PLANTERS ARE TO BE INSTALLED AT A MINIMUM OF 5 FEET FROM THE CURB AND 5 FEET FROM THE ADJACENT DRIVEWAY. PLANTERS ARE TO BE INSTALLED AT A MINIMUM OF 5 FEET FROM THE ADJACENT DRIVEWAY. PLANTERS ARE TO BE INSTALLED AT A MINIMUM OF 5 FEET FROM THE ADJACENT DRIVEWAY.
- CONTINUED FOR SHEET LL-3 WITH SOIL SPECIFIED ON L.L.

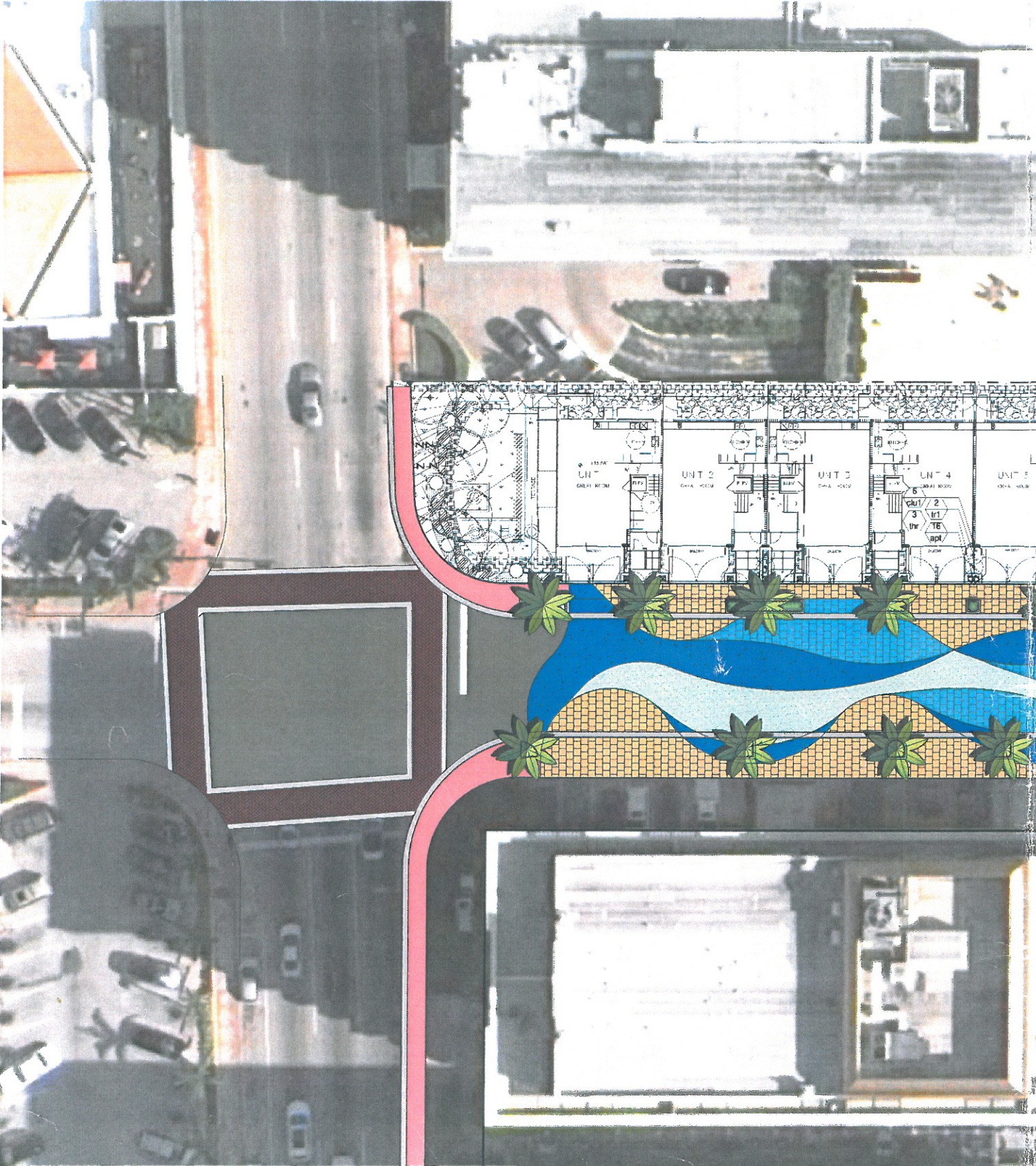


SOIL, FILL EAST OF THE EXISTING SEA WALL.
 1. IMPORTED SOIL FILL EAST OF THE EXISTING SEA WALL SHALL BE MATERIAL CONSISTENT AND INDICATIVE OF NATIVE DUNE SOIL PROFILE PER STATE STATUTE.
 2. FILL UNDER THE PROPOSED WALKWAYS SHALL BE PER THE LANDSCAPE DETAILS.

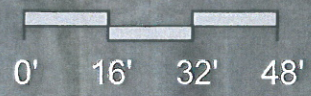
SYMBOL LEGEND

#	SYM
#	#

SEE SHEET LL-3 FOR PLANT MATERIAL LIST.
 REFERS TO RELOCATED PLANT. SEE SHEET LL-0. TREE INVENTORY AND DISPOSITION PLAN FOR SIZES, SPECS, AND ORIGINAL LOCATIONS.



Streetscape Option #2



SCHEDULE O

Contractor is responsible for verifying quantities and bringing discrepancies to the attention of landscape architect for clarification. Any discrepancies in quantities or units discovered or disclosed after award will be priced upon the unit price stated below.

PROJECT:		95th St. Streetscape Improvements, Town of Surfside, FL		WEST CONSTRUCTION		WILLIAMS PAY	
PAY ITEMS	APPROXIMATE QUANTITY & UNITS	DESCRIPTION		UNIT PRICE	EXTENDED PRICE	UNIT PRICE	CIVIL ENGINEER
AREA "A" 95th Street Right-of-Way							
1	1	LS	General: This item includes all Permitting Fees, Insurance and Bonds. Including NPDES, FDOT MOT, FDOT Construction Agreement Permits.		\$27,840.00	\$27,840.00	\$10,608.39
2	1	LS	Mobilization: All work required to mobilize equipment and personnel to begin work at project site. This line item also includes demobilization of equipment and personnel at completion of job.		\$1,160.00	\$1,160.00	\$10,603.39
3	1	LS	Demolition: Furnish all, equipment, machinery, tools, apparatus, means of transportation and labor necessary for and complete the project in full and complete accordance with the shown, noted, described and reasonably intended requirements of the plans. This item includes but is not limited to removal of existing asphalt paving, sidewalks, curbing as noted, and fixtures and excavation of proposed and existing planters.		\$11,223.00	\$11,223.00	\$5,783.54
4	1	LS	Clearing and grubbing: All work furnish and install required to clear site of existing sod, remove trees noted on plans and disposal of all material.		\$1,740.00	\$1,740.00	\$1,612.45
5	1	LS	Fill: Furnish and install fill in accordance with plans. Work shall include the necessary grading to achieve the desired site grading. Fill shall meet Florida Department of Environmental Protection requirements.		\$1,740.00	\$1,740.00	\$14,065.43
6	1	LS	Excavation: Furnish and install excavation in accordance with plans and specifications. Work shall include the movement of material onsite to achieve the desired site grading. Work shall also include all costs to haul, and dispose of all deleterious excavated material not suitable for use onsite.		\$1,160.00	\$1,160.00	\$4,369.01
7	1	LS	Grading: All work required to grade site to elevations depicted on plans for soft and hard areas. This work shall include surveying, staking and any activity and equipment necessary to deliver a graded site.		\$4,060.00	\$4,060.00	\$4,248.52
8	1	LS	Drainage: Furnish and install all materials, equipment, machinery, tools, apparatus, means of transportation and labor necessary for and complete the project in full and complete accordance with the shown, noted, described and reasonably intended requirements of the plans and specifications. This item includes but is not limited to drainage structures, pipes, under drain, exfiltration trench , and coring of existing structure.		\$40,600.00	\$40,600.00	\$31,097.56
9	1	LS	Water: Furnish and install all materials, equipment, machinery, tools, apparatus, means of transportation and labor necessary for and complete the project in full and complete accordance with the shown, noted, described and reasonably intended requirements of the plans and specifications. This item includes but is not limited to irrigation water meter, irrigation backflow preventer, irrigation service and shower as per the plans.		\$31,552.00	\$31,552.00	\$3,181.02
9	1	LS	Signage: Furnish and install all materials, equipment, machinery, tools, apparatus, means of transportation and labor necessary for and complete the project in full and complete accordance with the shown, noted, described and reasonably intended requirements of the plans. This item includes but is not limited to one Stop Sign and replacement of any existing signs that are disturbed in any way shape or form.		\$348.00	\$348.00	\$1,060.34
Sub Total					\$121,423.00		

PROJECT:			95th St. Streetscape Improvements, Town of Surfside, FL	WEST CONSTRUCTION		WILLIAMS PA
PAY ITEMS	APPROXIMATE QUANTITY & UNITS		DESCRIPTION	UNIT PRICE	EXTENDED PRICE	UNIT PRICE
AREA "B" 95th on Ocean Adjacent Property						
11	1	LS	General: This item includes all Permitting Fees, Insurance and Bonds. Including NPDES, FDOT MOT, FDOT Construction Agreement Permits.	\$1,740.00	\$1,740.00	\$10,603.41
12	1	LS	Mobilization: All work required to mobilize equipment and personnel to begin work at project site. This line item also includes demobilization of equipment and personnel at completion of job.	\$232.00	\$232.00	\$10,603.41
13	1	LS	Demolition: Furnish all, equipment, machinery, tools, apparatus, means of transportation and labor necessary for and complete the project in full and complete accordance with the shown, noted, described and reasonably intended requirements of the plans and specifications. This item includes but is not limited to removal of existing asphalt paving, sidewalks, curbing as noted, and fixtures.	\$1,740.00	\$1,740.00	\$3,224.92
14	1	LS	Clearing and grubbing: All work furnish and install required to clear site of existing sod, remove trees noted on plans and disposal of all material.	\$580.00	\$580.00	\$1,829.92
15	1	LS	Fill: Furnish and install fill in accordance with plans and specifications. Work shall include the necessary grading to achieve the desired site grading. Fill shall meet Florida Department of Environmental Protection requirements.	\$11,020.00	\$11,020.00	\$10,702.18
16	1	LS	Excavation: Furnish and install excavation in accordance with plans and specifications. Work shall include the movement of material onsite to achieve the desired site grading. Work shall also include all costs to haul, and dispose of all deleterious excavated material not suitable for use onsite.	\$870.00	\$870.00	\$1,590.66
17	1	LS	Grading: All work required to grade site to elevations depicted on plans for soft and hard areas. This work shall include surveying, staking and any activity and equipment necessary to deliver a graded site.	\$1,160.00	\$1,160.00	\$2,052.29
Sub Total					\$17,342.00	

PROJECT:			95th St. Streetscape Improvements, Town of Surfside, FL		WEST CONSTRUCTION		WILLIAMS PAV	
PAY ITEMS	APPROXIMATE QUANTITY & UNITS		DESCRIPTION		UNIT PRICE	EXTENDED PRICE	UNIT PRICE	
SITE CONCRETE, PA								
AREA "A" 95th Street Right-of-Way								
18	11,000	SF	12" Compacted Subgrade		\$1.28	\$14,080.00	\$0.59	
19	6,000	SF	8" Compacted Lime Rock Base		\$1.91	\$11,460.00	\$2.62	
20	4,810	SF	6" Compacted Lime Rock Base		\$3.71	\$17,845.10	\$2.13	
21	600	LF	4" Lime Rock Curb Pad		\$3.48	\$2,088.00	\$8.51	
22	5	LF	Furnish and install: Color Concrete "F" Curb at drainage structure (corner of 95th and A1A)		\$34.80	\$174.00	\$374.24	
23	32	LF	Furnish and install: 12" Concrete Band at cross walk		\$17.40	\$556.80	\$71.76	
24	20	LF	Furnish and install: Colored Concrete Sidewalk (Width Varies Per Plan) at corner of 95th and A1A.		\$58.00	\$1,160.00	\$136.14	
25	10,842	SF	Furnish and install: 6" x 6" HT Concrete Pavers x 60MM, 45° Stack Bond Squares, Color: see Hardscape Finish Schedule items "A,B,C, and D"		\$4.06	\$44,018.52	\$3.71	
26	72	CY	2" Compacted Construction Sand Base		\$23.20	\$1,658.80	\$1.06	
27	26	SF	Furnish and install: 6" x 6" HT Concrete Pavers x 60MM, 90° Stack Bond Squares, Color:white with reflectivity		\$11.60	\$301.60	\$8.48	
28	1,023	LF	Furnish and install: 4" x 8" PS Concrete Pavers x 60MM, 8" Soldier Course, Color: White, see Hardscape Finish Schedule item "E"		\$5.80	\$5,933.40	\$11.13	
29	25	SF	Furnish and install: 4" x 8" PS Concrete Pavers x 60MM, 90° Stack Bond Rectangles, Color: White with Reflectivity, see Hardscape Finish Schedule item "F" (Stop Bar)		\$15.08	\$377.00	\$11.13	
30	53	SF	Furnish and install: 4" x 8" ADA Concrete Pavers x 60MM, 90 Stack Bond Rectangles, Color: see Hardscape Finish Schedule item "F1"		\$11.60	\$614.80	\$11.13	
31	1	LS	Furnish and install: Concrete Sidewalk and Stair w/welded wire mesh reinforcement, medium broom finish, 6" tooled continuous concrete edge along all edges, including all structural design, ADA compliant Stainless Steel hand railings and 8"H x 6"W Color Concrete Cheek wall, see Hardscape Finish Schedule item "O"		\$13,598.00	\$13,598.00	\$15,485.56	
32	340	LF	Furnish and install: 6" Color Concrete "D" Curb (Planters), see Hardscape Finish Schedule item "K"		\$23.20	\$7,888.00	\$21.33	
33	230	LF	Furnish and install: 2'-0" Color Concrete Valley Gutter, see Hardscape Finish Schedule item "L"		\$23.20	\$5,336.00	\$13.14	
34	30	LF	Furnish and install: 2'-0" Color Concrete Ribbon Curb, see Hardscape Finish Schedule item "M"		\$23.20	\$696.00	\$40.30	
35	383	LF	Furnish and install: 6" Color Concrete Band, see Hardscape Finish Schedule item "N"		\$23.20	\$8,885.60	\$18.94	
36	1	LS	Furnish and install 1' X 2' X 30' continuous concrete reinforced bollard footing, see Hardscape Details.		\$2,204.00	\$2,204.00	\$4,835.38	
37	1	LS	Furnish and install a concrete reinforced bike rack footing, per Hardscape Details.		\$580.00	\$580.00	\$2,956.61	
Sub Total						\$139,455.62		

PROJECT:			95th St. Streetscape Improvements, Town of Surfside, FL	WEST CONSTRUCTION		WILLIAMS PAY
PAY ITEMS	APPROXIMATE QUANTITY & UNITS		DESCRIPTION	UNIT PRICE	EXTENDED PRICE	UNIT PRICE
AREA "B" 95th on Ocean Adjacent Property						
38	400	SF	Furnish and install: Concrete Sidewalk w/welded wire mesh reinforcement, medium broom finish, 6" tooled continuous concrete edge along all edges, see Hardscape Finish Schedule item "O1"	\$6.50	\$2,600.00	\$8.21
Sub Total					\$2,600.00	
SITE FUR						
AREA "A" 95th Street Right-of-Way						
39	2	EA	Litter Receptacles: Stainless Steel, Side Opening, 30 Gal. Model Lakeside-Grass Furnish and install Litter Receptacle and all costs associated with material handling, storage and delivery, shall meet or exceed the specifications as indicated in the site furniture schedule and plans. Item includes all Litter Receptacles within project area, see Hardscape Finish Schedule item "G"	\$1,624.00	\$3,248.00	\$1,251.20
40	3	EA	Bike Racks: Stainless Steel Model Ring / Embedded or approved equal. Furnish and install bike rack and all cost associated with material handling, storage and delivery, shall meet or exceed the specifications as indicated in the site furniture schedule and plans. Item includes all Bike Racks within project area, see Hardscape Finish Schedule item "H"	\$580.00	\$1,740.00	\$2,984.30
41	6	EA	Bench: Reinforced Cast Stone Glass Lenses Bench, Model Escofet - Villet / Embedded or approved equal. Furnish and install bench and all costs associated with material handling, storage and delivery, shall meet or exceed the specifications as indicated in the site furniture schedule and plans. Item includes all Benches within project area see Hardscape Finish Schedule item "I"	\$3,248.00	\$19,488.00	\$2,072.96
42	1	EA	Beach Shower: Four heads and one foot spray head, Model Stainless Steel 590SMSS or approved equal. Furnish and install Beach Shower and all costs associated with material handling, storage and delivery, shall meet or exceed the specifications as indicated in the site furniture schedule and plans. Item includes Beach Shower within project area see Hardscape Finish Schedule item "J"	\$6,496.00	\$6,496.00	\$5,635.71
Sub Total					\$30,972.00	

PROJECT:			95th St. Streetscape Improvements, Town of Surfside, FL	WEST CONSTRUCTION		WILLIAMS PAY
PAY ITEMS	APPROXIMATE QUANTITY & UNITS		DESCRIPTION	UNIT PRICE	EXTENDED PRICE	UNIT PRICE
424						
43	2	EA	Relocate <i>Phoenix dactylifera</i> 'Medjool', transplant and install plants including planting soil, fertilizer, herbicide, pre-emergence herbicide, seed and staking/guying.	\$870.00	\$1,740.00	\$2,120.69
44	9	EA	Relocate <i>Sabal palmetto</i> , transplant and install plants including planting soil, fertilizer, herbicide, preemergence herbicide, seed and staking/guying.	\$174.00	\$1,566.00	\$424.14
45	13	EA	<i>Phoenix dactylifera</i> 'Medjool', furnish and install trees including planting soil, fertilizer, herbicide, preemergence herbicide, seed, mulch and meet or exceed the size as indicated in the plant list, plans and specs.	\$5,776.80	\$75,098.40	\$6,468.08
46	230	EA	<i>Uniola paniculata</i> , furnish and install shrubs and groundcovers including planting soil, fertilizer, herbicide, preemergence herbicide, seed, mulch and meet or exceed the size as indicated in the plant list, plans and specs.	\$4.64	\$1,067.20	\$15.37
47	683	EA	<i>Helianthus debilis</i> , furnish and install shrubs and groundcovers including planting soil, fertilizer, herbicide, preemergence herbicide, seed, mulch and meet or exceed the size as indicated in the plant list, plans and specs.	\$4.64	\$3,169.12	\$15.37
48	190	EA	<i>Spartina bakeri</i> , furnish and install shrubs and groundcovers including planting soil, fertilizer, herbicide, preemergence herbicide, seed, mulch and meet or exceed the size as indicated in the plant list, plans and specs.	\$4.64	\$881.60	\$15.37
49	1	EA	<i>Zamia furfuracea</i> (45 gal.), furnish and install shrubs and groundcovers including planting soil, fertilizer, herbicide, preemergence herbicide, seed, mulch and meet or exceed the size as indicated in the plant list, plans and specs.	\$348.00	\$348.00	\$371.12
50	2	EA	<i>Zamia furfuracea</i> (15 gal.), furnish and install shrubs and groundcovers including planting soil, fertilizer, herbicide, preemergence herbicide, seed, mulch and meet or exceed the size as indicated in the plant list, plans and specs.	\$197.20	\$394.40	\$212.07
51	240	SF	<i>Paspalum 'Aloha Seashore'</i> , furnish and install sod including planting soil, fertilizer, herbicide, preemergence herbicide, seed, mulch and meet or exceed the size as indicated in the plant list, plans and specs.	\$1.57	\$376.80	\$4.24
52	66	QY	Furnish and install soil mixture (3; LL-3) in planters; both existing and proposed.	\$45.24	\$2,985.84	\$47.72
53	22	QY	Furnish and install organic mulch such as Flora Mulch or approved equal. Red mulch or Cypress are strictly prohibited.	\$45.24	\$995.28	\$42.41
Sub Total					\$88,622.64	
AREA "B" 95th on Ocean Adjacent Property						
54	6	EA	Relocate <i>Sabal palmetto</i> , transplant and install plants including planting soil, fertilizer, herbicide, preemergence herbicide, seed and guying/staking.	\$174.00	\$1,044.00	\$424.14
55	10	EA	<i>Sabal palmetto</i> , furnish and install trees including planting soil, fertilizer, herbicide, preemergence herbicide, seed, mulch and meet or exceed the size as indicated in the plant list, guying/staking, plans and specs.	\$220.40	\$2,204.00	\$265.09
56	4	EA	<i>Uniola paniculata</i> , furnish and install shrubs and groundcovers including planting soil, fertilizer, herbicide, preemergence herbicide, seed, mulch and meet or exceed the size as indicated in the plant list, plans and specs.	\$4.64	\$18.56	\$15.37
57	120	EA	<i>Helianthus debilis</i> , furnish and install shrubs and groundcovers including planting soil, fertilizer, herbicide, preemergence herbicide, seed, mulch and meet or exceed the size as indicated in the plant list, plans and specs.	\$4.64	\$556.80	\$15.37
58	350	EA	<i>Spartina bakeri</i> , furnish and install shrubs and groundcovers including planting soil, fertilizer, herbicide, preemergence herbicide, seed, mulch and meet or exceed the size as indicated in the plant list, plans and specs.	\$4.64	\$1,624.00	\$15.37
59	1,760	SF	<i>Paspalum 'Aloha Seashore'</i> , furnish and install sod including planting soil, fertilizer, herbicide, preemergence herbicide, seed, mulch and meet or exceed the size as indicated in the plant list, plans and specs.	\$1.57	\$2,763.20	\$4.24
60	20	CY	Furnish and install organic mulch such as Flora Mulch or approved equal. Red mulch or Cypress are strictly prohibited.	\$45.24	\$904.80	\$42.41
Sub Total					\$88,622.64	

PROJECT:			95th St. Streetscape Improvements, Town of Surfside, FL	WEST CONSTRUCTION		WILLIAMS PA
PAY ITEMS	APPROXIMATE QUANTITY & UNITS		DESCRIPTION	UNIT PRICE	EXTENDED PRICE	UNIT PRICE
Irrigation						
61	1	EA	Rain Bird Stream Bubbler PA-8S-5H-B	\$	\$13.92	\$21.21
62	3	EA	Rain Bird Stream Bubbler PA-8S-5CST-B	\$	\$41.76	\$21.21
63	4	EA	Rain Bird 4" Pop-up sprinkler / spray nozzle 1804-PRS-10T	\$	\$74.24	\$23.33
64	7	EA	Rain Bird 4" Pop-up sprinkler / spray nozzle 1804-PRS-10H	\$	\$129.92	\$23.33
65	2	EA	Rain Bird 12" Pop-up sprinkler / spray nozzle 1812-PRS-10V	\$	\$48.72	\$26.51
66	6	EA	Rain Bird 12" Pop-up sprinkler / spray nozzle 1812-PRS-10Q	\$	\$146.16	\$26.51
67	4	EA	Rain Bird 12" Pop-up sprinkler / spray nozzle 1812-PRS-10T	\$	\$97.44	\$26.51
68	16	EA	Rain Bird 12" Pop-up sprinkler / spray nozzle 1812-PRS-10H	\$	\$389.76	\$26.51
69	4	EA	Rain Bird 12" Pop-up sprinkler / spray nozzle 1812-PRS-10F	\$	\$97.44	\$26.51
70	3	EA	Rain Bird 12" Pop-up sprinkler / spray nozzle 1812-PRS-15RCS	\$	\$73.08	\$26.51
71	1	EA	Rain Bird 12" Pop-up sprinkler / spray nozzle 1812-PRS-15LCS	\$	\$24.36	\$26.51
72	1	EA	Rain Bird 12" Pop-up sprinkler / spray nozzle 1812-PRS-15SST	\$	\$24.36	\$26.51
73	500	LF	Techline Dripperline TLCV912	\$	\$1,090.00	\$1.06
74	8	EA	Techline Flush Valve TLFV	\$	\$222.72	\$26.51
75	2	EA	Rain Bird 1" Solenoid Valve 100PEB	\$	\$213.44	\$159.05
76	1	EA	Rain Bird Zone Control Kit XCZF-100-PRF	\$	\$203.00	\$159.05
77	1	EA	Rain Bird Auto Controller ESP-4M	\$	\$626.40	\$371.12
78	1	EA	Rain Bird Rain Sensor RSD-BEX	\$	\$90.48	\$132.54
79	1	EA	Febco Pressure Vacuum Breaker 765 (1 1/2")	\$	\$986.00	\$795.26
80	1	EA	Gate Valve (to line size)	\$	\$113.68	\$318.10
81	12	EA	Valve Box	\$	\$584.64	\$79.52
82	1	EA	City Water Meter	\$	\$730.80	\$5,301.71
83	1	LS	Furnish and install all (SCH 40 Galvanized steel pipes, SCH 40 PVC Main line, Sleeves, Laterals, Supply headers, Discharge header, Sprinkler riser, PVC Fitting, Wire conduit, soil staples, accessories, electric wire, etc.) in order to complete the irrigation System.		\$7,969.20	\$1,961.64
Sub Total					\$13,991.52	

PROJECT:			95th St. Streetscape Improvements, Town of Surfside, FL	WEST CONSTRUCTION		WILLIAMS PA
PAY ITEMS	APPROXIMATE QUANTITY & UNITS		DESCRIPTION	UNIT PRICE	EXTENDED PRICE	UNIT PRICE
AREA "B" 95th on Ocean Adjacent Property						
84	1	EA	Rain Bird 12" Pop-up sprinkler / spray nozzle 1812-PRS-10Q	\$	\$24.36	\$26.51
85	11	EA	Rain Bird 12" Pop-up sprinkler / spray nozzle 1812-PRS-10H	\$	\$267.96	\$26.51
86	2	EA	Rain Bird 12" Pop-up sprinkler / spray nozzle 1812-PRS-10F	\$	\$48.72	\$26.51
87	1	EA	Rain Bird 4" Pop-up sprinkler / rotary nozzle 1804-24Q	\$	\$23.20	\$23.33
88	5	EA	Rain Bird 4" Pop-up sprinkler / rotary nozzle 1804-24H	\$	\$116.00	\$23.33
89	1	EA	Rain Bird 4" Pop-up sprinkler / rotary nozzle 1804-24F	\$	\$23.20	\$23.33
90	3	EA	Rain Bird 12" Pop-up sprinkler / rotary nozzle 1812-24Q	\$	\$83.52	\$28.63
91	3	EA	Rain Bird 12" Pop-up sprinkler / rotary nozzle 1812-24H	\$	\$83.52	\$28.63
92	2	EA	Rain Bird 12" Pop-up sprinkler / rotary nozzle 1812-24F	\$	\$55.68	\$28.63
93	3	EA	Rain Bird 1" Solenoid Valve 100 PEB	\$	\$320.16	\$159.05
94	1	EA	Gate Valve (to line size)	\$	\$113.68	\$318.10
95	4	EA	Valve Box	\$	\$194.88	\$79.52
96	1	LS	Furnish and install all (SCH 40 Galvanized steel pipes, SCH 40 PVC Main line, Sleeves, Laterals, Supply headers, Discharge header, Sprinkler riser, PVC Fitting, Wire conduit, soil staples, accessories, electric wire, etc.) for a complete working irrigation System in place.	\$5,428.00	\$5,428.00	\$3,181.02
Sub Total					\$6,758.52	
AREA "A" 95th Street Right-of-Way						
97	250	LF	FPL Connection Point	\$22.27	\$5,567.50	\$20.36
98	3	EA	Light Pole, Beacon products luminaire 80W, Amber LED type 3 optics MRDS21/36NB-80/T3/UNV/BB mounted in Ameron Pole Kodiak Model: 10ET18-FBCMLS. Fixtures must include shades as required by Florida Department of Environmental Protection.	\$7,637.44	\$22,912.32	\$6,833.90
99	5	EA	Bollard, Gardco 830 Series LED Concrete Bollard Model # BRM833/36/CWL/LA/360/120-240/BLP	\$3,288.60	\$16,443.00	\$3,006.07
100	1	LS	Furnish and install (lighting pull box, concrete bases, miscellaneous conduit and wiring, installation, grounding, etc.) for a complete working Site Lighting system in place.	\$12,690.40	\$12,690.40	\$11,438.32
101	1	LS	3' X 8' X 3' Stainless Steel Service Point Enclosure, footing and attachment; see hardscape details	\$10,863.40	\$10,863.40	\$9,702.10
102	1	LS	Service Point Riser	\$580.00	\$580.00	\$477.15
Sub Total					\$69,056.62	
TOTAL BASE BID PRICE (In Figures 1 thru 102)				\$578,844.56		\$527,090.78
STATED BID PRICE IN PROPOSAL				\$499,374.72		\$514,743.08
ADD ALTERATIONS						
103	11,963	SF	Substitute the base bid standard colored concrete pavers with custom dark color concrete pavers.	\$1.62	\$19,379.25	\$11.13
104	53	SF	Substitute the base bid standard colored concrete truncated dome pavers, with custom dark color concrete pavers.	\$1.62	\$85.86	\$11.13
105	2,500	SF	In the driveways for Spiaggia Ocean Building, between the 95th Street southern right-of-way line and the north face of the building, remove existing pavers and replace with same depth pavers, standard color concrete pavers per Item "A" on LH-3.	\$4.64	\$11,600.00	\$4.24
106	2,500	SF	In the driveways for Spiaggia Ocean Building, between the 95th Street southern right-of-way line and the north face of the building, remove existing pavers and replace with same depth pavers, custom dark color concrete pavers per Item "A" on LH-3.	\$4.64	\$11,600.00	\$11.66
107	230	LF	Replace existing colored valley gutter on the south side of the right-of-way with the same, in standard grey concrete.	\$23.20	\$5,336.00	\$30.00
108	110	LF	Replace existing colored Type "D" landscape planter curbs on the southside of the right-of-way with the same, in standard grey concrete.	\$23.20	\$2,552.00	\$40.00
109	65	LF	Substitute the base bid 3'x10' exfiltration trench with 4'x15' exfiltration trench.	\$3,480.00	\$226,200.00	\$230.00
ADD ITEMS 107 and 108					\$586,732.56	
Sub Total					\$276,753.11	

PROJECT:			95th St. Streetscape Improvements, Town of Surfside, FL	WEST CONSTRUCTION		WILLIAMS PA
PAY ITEMS	APPROXIMATE QUANTITY & UNITS		DESCRIPTION	UNIT PRICE	EXTENDED PRICE	UNIT PRICE
DEDUCT AL						
110	265	LF	Substitute the base bid colored concrete valley gutter, Type F' curb and ribbon curb with standard grey concrete.	\$1.16	\$307.40	\$25.00
111	1	LS	Substitute the base bid colored concrete sidewalk, stairs and cheek walls with standard grey concrete.	\$116.00	\$116.00	\$20,262.00
112	340	LF	Substitute the base bid colored concrete Type "D" curb with standard grey concrete.	\$1.16	\$394.40	\$32.50
113	383	LF	Substitute the base bid 6" colored concrete band with standard grey concrete.	\$1.16	\$444.28	\$30.00
Sub Total					\$1,262.08	
114	1	LS	Subtract all improvements east of the existing sea wall.	\$20,880.00	\$20,880.00	\$70,000.00

ABBREVIATIONS	
AC	Acre
CY	Cubic Yard
EA	Each
LF	Linear Foot
LS	Lump Sum
SF	Square Foot
SY	Square Yard