



## Town of Surfside

### SUSTAINABILITY & RESILIENCY COMMITTEE MEETING

#### AGENDA

January 16, 2019 – 7:00 p.m.

Chief Terrill Williamson Police Training Room  
9293 Harding Ave, 2<sup>nd</sup> Floor, Surfside, FL 33154

1. Call to Order/Roll Call
2. Approval of Meeting Minutes: December 18, 2018
3. Election of Officers
4. List of Environmental Resolutions and Ordinances – Guillermo Olmedillo, Town Manager
5. Beach and Dune Report Presentation – Sandra Lee, AICP CEP, LEED AP BD+C, CFM, Director Environmental, Calvin Giordano and Associates
6. Committee Priorities from the Town Commission
7. Public Comments (*3-minute time limit per speaker*)
8. Adjournment

THIS MEETING IS OPEN TO THE PUBLIC. IN ACCORDANCE WITH THE AMERICANS WITH DISABILITIES ACT OF 1990, ALL PERSONS THAT ARE DISABLED; WHO NEED SPECIAL ACCOMMODATIONS TO PARTICIPATE IN THIS MEETING BECAUSE OF THAT DISABILITY SHOULD CONTACT THE OFFICE OF THE TOWN CLERK AT 305-861-4863 EXT. 226 NO LATER THAN FOUR DAYS PRIOR TO SUCH PROCEEDING.

AGENDA ITEMS MAY BE VIEWED AT THE OFFICE OF THE TOWN CLERK, TOWN OF SURFSIDE TOWN HALL, 9293 HARDING AVENUE. ANYONE WISHING TO OBTAIN A COPY OF ANY AGENDA ITEM SHOULD CONTACT THE TOWN CLERK AT 305-861-4863. A COMPLETE AGENDA PACKET IS ALSO AVAILABLE ON THE TOWN WEBSITE AT [www.townofsurfsidefl.gov](http://www.townofsurfsidefl.gov).

TWO OR MORE MEMBERS OF TOWN COMMISSION OR OTHER TOWN BOARDS MAY ATTEND AND PARTICIPATE AT THIS MEETING.

THESE MEETINGS MAY BE CONDUCTED BY MEANS OF OR IN CONJUNCTION WITH COMMUNICATIONS MEDIA TECHNOLOGY, SPECIFICALLY, A TELEPHONE CONFERENCE CALL. THE LOCATION 9293 HARDING AVENUE, SURFSIDE, FL 33154, WHICH IS OPEN TO THE PUBLIC, SHALL SERVE AS AN ACCESS POINT FOR SUCH COMMUNICATION.



## Town of Surfside

### SUSTAINABILITY & RESILIENCY COMMITTEE MINUTES

**December 18, 2018 – 7:00 p.m.**

Chief Terrill Williamson Police Training Room  
9293 Harding Ave, 2<sup>nd</sup> Floor, Surfside, FL 33154

#### 1. Call to Order/Roll Call

The meeting was called to order at 7:03 p.m.

The following were present: Bertha Goldenberg  
Deborah Cimadevilla  
Clara Diaz-Leal

Absent: Andrea Travani

Also present: Daniel Dietch, Town Mayor  
Lillian Arango, Town Attorney  
James Hickey, Town Planner  
Guillermo Olmedillo, Town Manager  
Duncan Tavares, Asst. Town Manager  
Elora Riera, Deputy Town Clerk

#### 2. Welcome

Town Manager Olmedillo welcomed and thanked the Committee members for their willingness to serve on the Committee. Staff introduced themselves to the Committee.

#### 3. Orientation

- a. Sunshine Laws
- b. Public Records/Retention
- c. Sustainability and Resiliency Committee

Town Attorney Arango provided an orientation packet to the Committee Members and explained each of the different sections of the packet which included the sunshine laws, public records and retention and the Committee resolution and charter.

Assistant Town Manager Tavares commented that there were some items from the previous Sustainability Sub Committee that were approved in the Town Commission budget this year. He discussed the dune management plan which would be an item for the Committee to discuss at future meetings.

Mayor Dietch explained what the intended goal of the Committee was and the different possible initiatives that can be discussed and moved forward by the Committee.

Committee Member Goldenberg requested if the Committee could be provided with a list of sustainability initiatives that have already been done by the Town.

Mayor Dietch commented about a design program that Miami Beach has done. He spoke with the City of Miami Beach Sustainability Director, Betsy Wheaton who would love to come to present what Miami Beach has done.

Discussion ensued regarding the procedures and process of the Committee. The Committee discussed some different topics related to sustainability that can be discussed at future meetings such as invasive species growing in the dunes and undergrounding of power lines.

Assistant Town Manager Tavares commented that thus far what he has for the next meeting agenda is to invite Sustainability Director Betsy Wheaton to discuss sustainability initiatives, the dune management report and a list of sustainability initiatives that have already been done by the Town.

#### **4. 2019 Meeting Schedule Options**

Assistant Town Manager Tavares commented that the election of officers will take place once there is a full Committee.

Town Manager Olmedillo explained the role of the Chair, the Vice Chair and the Secretary of the Committee.

After some discussion, the Committee agreed to hold the meetings at 6:30 p.m. Assistant Town Manager Tavares stated that the Town Clerk's office will review the calendar to see what days are available and not reserved for other Board or Committee meetings and advise the Committee of which day will work best.

#### **5. Public Comments**

There were no public comments.

THIS SPACE INTENTIONALLY LEFT BLANK

**6. Adjournment**

Committee Member Diaz-Leal moved to adjourn the meeting at 8:29 p.m. Committee Member Cimadevilla seconded the motion and all voted in favor.

Respectfully submitted:

Accepted this \_\_\_\_\_ day of \_\_\_\_\_, 2019

Attest:

\_\_\_\_\_  
Elora Riera, CMC  
Deputy Town Clerk

DRAFT

# Environmental Resolutions & Ordinances

2011 – 2018

2018

Resolution No. 18-2543	Approving An Agreement With Waste Management Inc. Of Florida For Recycling Services; Finding That The Services Are Exempt From Competitive Procurement Pursuant To Section 3-13(3) Of The Town Code Of Ordinances
Resolution No. 18-2528	Opposing Offshore Drilling Activities, Including Seismic Air gun Blasting
Resolution No. 18-2524	Relating To Solid Waste Management Services, Including Collection, Disposal And Recycling Of Residential Solid Waste In The Town Of Surfside, Florida; Describing The Method Of Assessing Solid Waste Costs Against Assessed Property Located Within The Town Of Surfside; Determining The Solid Waste Cost And The Initial Solid Waste Service Assessments; Directing The Preparation Of An Assessment Roll
Resolution No. 18-2522	Approving Property Assessed Clean Energy (Pace) Programs With The Florida Green Finance Authority, The Florida Resiliency And Energy District, And The Florida Pace Funding Agency
Resolution No. 18-2521	Approving The Proposal And Work Authorization With Calvin Giordano & Associates, Inc. To Perform A Dune Survey And Beach Management Plan
Resolution No. 18-2519	Sunsetting And Abolishing The Town Of Surfside Sustainability Subcommittee Of The Planning And Zoning Board
Resolution No. 18-2518	Establishing The Town Of Surfside Sustainability And Resiliency Committee To Study And Recommend Policies To The Town Commission
Resolution No. 18-2509	Approving A Work Authorization To Calvin Giordano & Associates, Inc. To Perform A Drainage Study For Abbott Avenue
Resolution No. 18-2501	Ratifying And Approving A Donation To The Pelican Harbor Seabird Station In Support And Sponsorship Of Their Programs
Resolution No. 18-2498	Adopting A Proclamation Honoring The Importance Of Trees For The Town Of Surfside's Community And Environment And Encouraging The Planting Of Trees; Proclaiming April 17, 2018 In The Town Of Surfside As "Arbor Day"

- Resolution No. 18-2497 Amending The Town's Schedule Of Civil Penalties And Administrative Fees To Be Assessed For Violations Of Section 34-11, "Prohibition On Distribution, Sale Or Use Of Plastic Straws"
- Resolution No. 18-2493 Urging Concerted Local Actions To Take Steps Necessary To Retain The NOAA Fisheries Headquarters On Virginia Key
- Resolution No. 18-2492 Waiving All Town Building Permit Fees And Requiring Expedited Development And Review Processes For Photovoltaic Solar System Installations
- Resolution No. 18-2490 Calling On The State Of Florida, Governor Rick Scott, President Donald Trump, And The Federal Government To Reduce Gun Violence In America And Help Prevent Future Shootings By Requiring Universal Background Checks For Every Firearm Sale; Supporting The Passage Of A Red Flag Law; Supporting Raising The Age For Legal Purchase Of Firearms, Magazines And Ammunition To 21; Supporting The Passage Of Legislation That Would Keep Military-Style Weapons And High-Capacity Magazines Away From Our Schools
- Resolution No. 18-2486 Urging The United States Congress To Fund The Study Of Foreign Sand Use In Beach Nourishment Projects In Miami-Dade County
- Resolution No. 18-2484 Urging The United States Congress To Support Language In The Fy 2018 Federal Appropriations Bill And The 2018 Disaster Recovery Supplemental Providing For 100 Percent Federal Funding Of The South Atlantic Coastal Study Authorized In Section 1204 Of The Water Infrastructure Improvements For The Nation Act, With The Necessary Language And Funding To Ensure Inclusion Of The Previously Authorized Central And South Florida Flood Control Project And Its Area As Part Of This Study
- Resolution No. 18-2483 Setting A Goal For All Town Buses To Be Zero-Emission And Powered By Clean Energy By 2025; Urging Miami-Dade County And All Municipalities In The County To Adopt The Same Goal
- Resolution No. 18-2482 Declaring April As Water Conservation Month In The Town Of Surfside, Florida, And Supporting The National "Wyland Mayor's Challenge For Water Conservation" In The Town Of Surfside
- Ordinance No. 18-1688 Amending The Town Code By Creating Article Vi, "Lighting Regulations For Marine Turtle Protection" Of Chapter 34 "Environment
- Ordinance No. 18-1680 Amending The Town Of Surfside Code Of Ordinances By Amending Article Iii, Property Maintenance Standards, Of Chapter 14, Buildings And Building Regulations, And Chapter 90, Zoning, To Prohibit Use Of Mulch In The Right-Of-Way And Address Property

- Owner Maintenance Responsibilities For Public Right-Of-Way Adjacent To Private Property
- Ordinance No. 18-1676 Amending Chapter 34 "Environment" Of The Town's Code Of Ordinances To Create Section 34-11, "Prohibition On Distribution, Sale Or Use Of Plastic Straws"
- Ordinance No. 18-1673 Amending Chapter 90 "Zoning," Section 90-2 "Definitions," To Revise The Measurement Of Roof Height

**2017**

- Resolution No. 17-2477 Approving The Memorandum Of Understanding ("MOU") With The Village Of Bal Harbour And The Town Of Bay Harbor Islands To Retain The Lehman Center For Transportation Research At Florida International University (FIU LCTR) To Assess Shuttle Bus Services; Authorizing The Town To Enter Into An Agreement With FIU LCTR For Such Services
- Resolution No. 17-2475 Providing For The Town To Join The Seawall Coalition And Supporting Its Policies; Authorizing The Town Manager To Transmit This Resolution To The Seawall Coalition
- Resolution No. 17-2473 Urging The Florida Legislature And The Florida Public Service Commission To Require The Expedient Conversion Of Overhead Electric Distribution Facilities To Underground Facilities; Further Urging The Florida Public Service Commission To Condition Any Hurricane Irma Cost Recovery Sought By The State's Power Companies On Such Companies' Required Conversion Of Their Overhead Electric Distribution Facilities To Underground Facilities
- Resolution No. 17-2459 Urging The Florida Public Service Commission To Require Florida Power & Light To Improve Safety, Reliability And Service Of Its Electric Facilities Within The Town Of Surfside, Including Hurricane Preparedness And Restoration Efforts
- Resolution No. 17-2447 Urging The Florida Legislature To Appropriate Funds For Beach Renourishment Projects; Supporting Senate Bill 174
- Resolution No. 17-2445 Endorsing And Supporting The Expansion Of The New Starts Transit Program (Nstp) To Facilitate Funding For The Strategic Miami Area Rapid Transit (Smart) Plan
- Resolution No. 17-2434 Approving The Renewal Of The Interlocal Agreement Between Co-Permittees Named In National Pollutant Discharge Elimination System Permit No. Fls000003 And Miami-Dade County; And Also Between All Co-Permittees; Providing For Identification And Control Of Pollutant Discharges In Shared Municipal Separate Storm Sewer Systems

- Resolution No. 17-2430 Adopting The Current Miami-Dade County Multi-Hazard Local Mitigation Strategy, As Amended, In Accordance With The National Flood Insurance Program Community Rating System Requirements
- Resolution No. 17-2420 Supporting United States Congressional Bills .279 And H.B. 833 To Amend Section 935 of the Water Resources Development Act Of 1986 to Facilitate the Use of Foreign Offshore Sand in Beach Nourishment Projects; Urging the United States Congress To Expedite And Fund The Study To Allow Foreign Sand To Be Used In Beach Nourishment Projects In Miami-Dade CPIMTU
- Resolution No. 17-2419 Supporting He Implementation of Active Design Miami; Design and Policy Strategies for Healthier Communities as Developed by The Miami Center for Architecture and Design (MCAD)
- Resolution No. 17-2414 Waiving the Bid Process Pursuant to Section 3-13(6) Of the Town of Surfside Code Of Ordinances; Authorizing The Town Manager To Enter Into A Sole Source Connect Services Agreement With Big Belly Solar, Inc. For A Erm Of Five (5) Years Effective April 1, 2017 With Subsequent One (1) Year Renewal Terms For The Service, Including Software, Equipment, Equipment Delivery, Installation, Customer Service And Equipment Maintenance, Warranty For Defective Part Replacement And Repair, Set Up And Training For Twelve Solar Trash And Recycling Compaction Containers; Approving And Authorizing The Expenditure Of Funds In The Amount Of \$15,040 From The Fiscal Year 2016/2017 Solid Waste Fund Account No. 403-4000-534-4403
- Resolution No. 17-2413 Urging The U.S. Army Corps Of Engineers, The Florida Department Of Environmental Protection And The South Florida Water Management District To Take All Steps Necessary To Expedite And Complete The Construction Of Phase I Of The Biscayne Bay Costal Wetlands ("BBCW") Project; Further Urging The U.S. Army Corps Of Engineers, The Florida Department Of Environmental Protection And The South Florida Water Management District To Take All Steps Necessary To Expedite The Planning Of Phase II Of The BBCW Project Prior To The Current Scheduled Date Of 2021

**2016**

- Resolution No. 16-2405 Urging Bal Harbour Village to Work Cooperatively to Address Impacts Identified by The Town of Surfside in Development Related to Bal Harbour Shops Expansion
- Resolution No. 16-2402 Urging the U.S. Environmental Protection Agency to Adhere to Stricter Standards and To Continue to Maximize Opportunities for



The Protection of Public Health and The Environment in their Consideration of Florida’s Proposed Human Health-Based Water Quality Criteria

- Resolution No. 16 – 2384 Approving Work Authorization No. 98 Seawall Grant Application and Management for the Surfside Seawall Replacement Project Phase II
- Resolution No. 16 – 2383 Awarding a Contract to Pac Comm, Inc. For The Surfside Seawall Replacement Project Phase II
- Resolution No. 16 – 2378 Establishing the Town of Surfside Sustainability Subcommittee of the Planning and Zoning Board to Meet on a Periodic Basis
- Resolution No. 16 – 2369 Supporting the National “Wyland Mayor’s Challenge for Water Conservation” in the Town of Surfside
- Resolution No. 16-2368 Supporting And Endorsing He Miami-Dade Parks And Open Space Master Plan
- Resolution No. 16–Z–2360 A Resolution of The Town of Surfside, Florida Planning And Zoning Board; Recommending to the Town of Surfside Commission pursuant to Section 90-15(8) of the Town of Surfside Code of Ordinances to Appropriate Resources from the General Fund to the Planning and Zoning Board as Requested to Provide for the Consultation, Implementation and Study Related to Sea Level Rise Solutions in the Town of Surfside
- Resolution No. 16 – 2355 Urging the United States Congress to Establish a Fund to Financially Assist and Support Local Governments, such as the Town of Surfside, Florida in Developing and Implementing Solutions to Sea Level Rise and Related Impacts
- Resolution No. 16 – 2354 Adopting a Proclamation Honoring the Importance of Trees for the Town of Surfside’s Community and Environment; Proclaiming April 17 in the Town of Surfside as “Arbor Day”
- Resolution No. 16 – 2351 Urging the Florida Legislature to Allocate \$300 Million of the Funds in the Land Acquisition Trust Fund Annually Toward Land Acquisition

**2015**

- Resolution No. 15 – 2320 Supporting the Dade County Beach Erosion Control and Hurricane Protection Project, and Urging Miami-Dade County, the State of Florida, and the United States Army Corps of Engineers to Provide Recurring Appropriations to Advance Beach Renourishment in Surfside and Miami-Dade County On Or Ahead of Schedule

- Resolution No. 15 – 2313 Supporting the Creation of the South Florida Mayors’ Beach Alliance
- Resolution No. 15 – 2309 Urging the Florida Legislature to Remove Barriers to Customer-Sited Solar Power and Expressing Support for the Floridians For Solar Choice Ballot Petition
- Resolution No. 15 – 2308 Establishing the Town of Surfside Coastal Issues Committee
- Resolution No. 15 – 2298 Approving Assistance under the Florida Inland Navigation District Waterways Assistance Program
- Resolution No. 15 – 2291 Declaring April As Water Conservation Month In The Town Of Surfside, Florida, And Supporting The National “Wyland Mayor’s Challenge For Water Conservation” in The Town of Surfside
- Resolution No. 15 – 2288 Awarding Request for Proposal No. 2014-003 (“RFP No. 2014-003”) to Pac Comm, Inc. for the Surfside Seawall Replacement
- Resolution No. 15 – 2282 Urging the State of Florida Legislature and the Florida Department of Environmental Protection to Establish Chemical Testing Standards Prior to Issuing a Coastal Construction Control Line Permit (“CCCL”) which Authorizes the Transfer and Placement of Excavated Sand Seaward of the CCCL onto a Public Beach; Recommending Additional Chemical Testing Standards
- Ordinance No. 15 – 1639 Prohibitions Regarding the Sale or Use of Expanded Polystyrene Food Service Articles by Food Service Providers and Stores
- Ordinance No. 15 - 1631 Beach Sand Regulations
- Ordinance No. 15 – 1641 Amending the Town’s Water Supply Facilities Work Plan and Applicable Elements within the Town’s Comprehensive Plan Relating to Water Supply Planning
- Ordinance No. 15 - 1630 Prohibition Regarding Sale or Use of Expanded Polystyrene (Styrofoam) Food Service Articles

**2014**

- Ordinance No. 14 – 1623 Rooftop Photovoltaic Solar Systems
- Ordinance No. 14 – 1617 Electric Vehicle Car Charging Station
- Resolution No. 14 – 2222 Supporting the Central Everglades Planning Project
- Resolution No. 15 – 2280 Supporting the Miami-Dade Sea Level Rise Task Force Recommendations

**2013**

Resolution No. 13 – 2152	Endorsing the Mayor’s Climate Action Pledge
Resolution No. 13 – 2170	Creating a Property Assessed Clean Energy Program and Creating the Clean Energy Coastal Corridor Program through an Interlocal Agreement.
Resolution No. 13 - 2192	Supporting Florida Water and Land Conservation Amendment which would dedicate funds to acquire and restore Florida Conservation and Recreation Lands
Resolution No. 13 - 2203	National Flood Insurance Program
Resolution No. 13 – 2207	Biscaya Drainage Improvement
Resolution No. 13 – 2211	Supporting Beach Dune Restoration & Jan 1 <sup>st</sup> Re-nourish Beach Day
Resolution No. 13 – 2212	Agreement with FL Inland Navigation District
Resolution No. 13 – 2214	Restricting the Use of Plastic Shopping Bags

**2012**

Resolution No. 2012 – 2066	Urging the Florida Legislature to reject any and all gambling expansions in Florida
Resolution No. 12 – 2103	Assistance from the Florida Inland Navigation District Waterways Assistance program for structural repairs to bulkhead
Resolution No. 12 – 2098	Renewal of Interlocal Agreement between all co-permittees in National Pollutant Discharge Elimination System and MDC
Resolution No. 12 – 2105	Supporting the Central Everglades Planning Project

**2011**

Resolution No. 11 – 2011	Encouraging the return or recycle of all beverage containers and other recyclable materials
Resolution No. 2011 – 2021	Earth Day Proclamation for April 22, 2011
Resolution No. 11 – 2050	Agreement with Urban Gardeners
Ordinance No. 11 – 1581	Prohibiting of Litter

**Town of Surfside**  
9293 Harding Avenue  
Surfside, FL 33154

Beach and Dune Report  
W.A. 110  
CGA Project number: 18-9942

Prepared By: **Calvin, Giordano & Associates, Inc.**  
E X C E P T I O N A L   S O L U T I O N S <sup>™</sup>



## BEACH CREATION AND STATUS

The approximate one mile length of public beach and dune along the Town of Surfside's (Town of Surfside) ocean frontage was created from a beach renourishment program. The federally-authorized Dade County Shore Protection Project, which included Surfside, began in 1978 and was completed in January 1982 using sand from offshore borrow sites. This project included creation of a 20 foot wide dune at elevation +10.7 foot NGVD and a 50 foot wide level storm protection berm at elevation +8.2 foot NGVD. Additional fill material, equivalent to ten years of advance nourishment, was placed seaward of the design berm with this initial program. The Miami-Dade (County) *Erosion Control Master Plan* (Plan) reports that an additionally 590,000 cubic yards of sand was placed in Surfside again in 1999. The attached aerial photographs of Surfside in 1970 and 1984 demonstrate the initial beach renourishment effort and the 1999 aerial photographs (February and December) demonstrate the follow-up project. See [Exhibit A. Aerial photograph of Surfside 1970 and 1984 and 1999](#).

The December 2017, *Critically Eroded Beaches in Florida*, report from the Florida Department of Environmental Protection (FDEP) states that most of the County's barrier island coast north of Cape Florida is critically eroded. FDEP, pursuant to rule 62B-36.002(5), Florida Administrative Code (F.A.C.), defines a critically eroded shoreline as, "a segment of the shoreline where natural processes or human activity have caused or contributed to erosion and recession of the beach or dune system to such a degree that upland development, recreational interests, wildlife habitat, or important cultural resources are threatened or lost. Critically eroded shorelines may also include peripheral segments or gaps between identified critically eroded areas which, although they may be stable or slightly erosional now, their inclusion is necessary for continuity of management of the coastal system or for the design integrity of adjacent beach management projects." The report identifies three critically eroded areas (17.0 miles), two non-critically eroded areas (1.4 miles) and one non-critically eroded inlet shoreline area (0.3 mile) in the County. Between Bakers Haulover Inlet and Government Cut (R27 – R74.4) are 9.4 miles of critical erosion, which threaten development and recreational interests along Bal Harbour, Surfside and Miami Beach. See [Exhibit B. Critically Eroded Beaches Map](#).

The Town is approximately 0.85 miles south of Bakers Haulover Inlet. The Plan states that "areas immediately south of most inlets typically experience erosion due to sand being lost, creating a deficit on the downdrift side. At Bakers Haulover Inlet, sand is lost due to high current velocities, which tend to jet sand coming into the inlet either offshore, or into Biscayne Bay, where it accumulates in ebb and flood shoals, respectively. While these shoals are periodically dredged and the sand placed on the beach, there are inherent losses which create erosional conditions. In addition to the direct effects of the inlet, the curved jetty structure on the south side of the inlet can result in wave refraction under certain weather conditions that can accelerate the loss of sand from the beach in the vicinity of the jetty." Although Bal Harbour, which lies immediately south of the jetty and to the north of Surfside, is most strongly affected by the inlet, the lack of downdrift sand also impacts the Town and the beaches to the south, by depletion of the sand source that naturally should drift south. Inlets throughout Florida are studied, monitored and managed in accordance with their adopted Inlet Management plans; *The Baker Haulover Inlet Management and Implementation Plan* was jointly developed by FDEP and the County. Ongoing is a *Baker Haulover Inlet Feasibility Study* that is funded by FDEP with the County leading this project. A Technical Advisory Group comprised of Surfside, Bal Harbour, Sunny Isles Beach, the County, FDEP and the Florida Inland Navigation District, has been meeting over this past year to collaboratively work with the firm of Moffat & Nichol to finalize the report that is evaluating and investigating improvements to sand bypassing at the inlet. It is anticipated the report will be completed in the spring of



2019. FDEP will then review and utilize the report to update the inlet management plan. The FDEP process may take an additional year.

Beaches and dunes are not discrete units confined by municipal limits; they are components of a larger ecosystem. The beach and dune system along Surfside is a part of the larger managed beach dune system along the County's Barrier Islands. An upcoming United States Army Corps of Engineers (ACOE) driven project proposes to place 300,000 cubic yards of sand along the beach front of Surfside from coastal range monument 31.5 to 36.5 (the entire length of the Town). This project is in the final stages of permit processing and it is anticipated work will begin in mid-2019. The proposed renourishment will have a typical berm crest of 6.1', a berm width of 240' and a construction slope of 1 vertical to 10 horizontal. The Town is an active partner with the ACOE and the County in this project. The Town is providing surveying services and permit processing services for this project. The State is reviewing the project and will be issuing a joint coastal permit through the Beaches, Inlets and Ports Program that falls within the FDEP. The County and the ACOE are co-permittees on this project and will also be issuing permits. For the Surfside project sand will be hauled to the site from approved inland sand mines sources.

The Town beach renourishment project is a component of an overall ACOE driven project in the County that also includes the Bal Harbour beach and the inlet. The Bal Harbour component involves inlet dredging as well as sand placement on the beach. It is anticipated work will begin in mid-2020 on this component. Other components of the overall County project include Sunny Isles Beach and segments of Miami Beach. These other components will run through 2020. Beach monitoring and renourishment throughout the County is a monitored and managed project with the ACOE and the County taking lead roles.

#### **BEACH OWNERSHIP, FEATURES AND REGULATORY STRUCTURE**

To understand ownership, responsibility and the applicable regulatory structure of the beach and dune system there are three distinct delineations that must be understood; these are: 1) the erosion control line (ECL), 2) the ocean bulkhead line and 3) the coastal construction control line (CCCL). These are shown on Exhibit C. Beach Aerial with ECL, Bulkhead and CCCL Delineations

1) Erosion Control Line: The ECL is defined in F.A.C. 62B-41.002(15) as "the line determined in accordance with the provisions of sections 161.141-.211, Florida Statute (F.S.) and recorded pursuant to section 161.181, F.S., in connection with beach restoration projects. Where established, an erosion control line represents the landward extent of the claims of the state in its capacity as sovereign title holder of the submerged bottoms and shores of the Atlantic Ocean, the Gulf of Mexico, the Straits of Florida and the bays, lagoons and other tidal reaches thereof."

The Plan describes the ECL as follows "Under Florida law, all land located seaward of the Mean High Water Line (MHWL) (with certain exceptions) is the property of the State of Florida. In implementing a beach nourishment or other activity that will artificially move the MHWL seaward, the State requires, pursuant to Chapter 161, F.S., that the project sponsor establish an ECL in order to allow the State to maintain ownership of these previously submerged areas. Prior to the establishment of an ECL, a riparian owner's seaward property line is the MHWL and is subject to fluctuation based on naturally occurring erosion or accretion. The establishment of an ECL occurs by surveying the location of the pre-project MHWL prior to the project using established survey procedures. This surveyed shoreline position then becomes a fixed property line known as the ECL. Once established, this line remains the seaward extent of the riparian owner, regardless of the change on the MHWL by fill placement or other means. In most cases, any new beach established seaward of the ECL is under State ownership and is available as public beach."



Within the Town the ECL runs roughly along the crest of the storm protection dune (slightly landward of the footpath that runs along the crest of the dune). Everything seaward of the ECL is owned by the State and is open for public recreation. See [Exhibit C. Beach Aerial with ECL, Bulkhead and CCCL Delineations](#). This line identifies the shoreline prior to the beach renourishment completed in 1982. Although not owned by the Town, the beach area east of the ECL does fall within the corporate limits of the Town. Other than one lifeguard station, there are no piers, cabanas, marinas or other structures on the public beach.

The beach and associated dune system seaward of the footpath is maintained through agreement and on behalf of the State by the County Park and Recreation Department. The beach is maintained in a natural condition. The County specifically mechanically and manually cleans the beach, removes seaweed, empties the trash cans and removes/levels any escarpments that form. The Town Commission recently approved and adopted in the 2018-2019 budget for additional mechanical beach raking to supplement that done by the County, the Town is working on implementing this raking program. The Town maintains the walking path on the crest of the dune.

Unless an extremely significant storm event would occur to move the MHWL landward of the existing ECL and a subsequent publically funded renourishment program would trigger the necessity for a new ECL survey, the ECL will remain static in the Town.

**2) Ocean Bulkhead Line:** The Town has established an ocean bulkhead line that falls within and applies to the privately owned beach front properties east of Collins Avenue; this line is also shown on Exhibit C. [Beach Aerial with ECL, Bulkhead and CCCL Delineations](#). The Town zoning code prohibits development or redevelopment seaward of the ocean bulkhead line. Seaward of this bulkhead line there are approximately 19 acres that lie adjacent to the State owned beach. Within this ocean bulkhead setback area, along the landward side of the dune, there is an unimproved maintenance path that is utilized by the State, the County and the Town that runs the entire length of the Town. This maintenance path is and has historically been, a popular public walking and biking path. This maintenance path, which is also utilized for emergency vehicles, is maintained by the Town. Any commercial use of the maintenance path, for construction or special events, etc., requires a Police Department Escort permit. Nearly all of the property owners have provided landscape improvements in the area between the bulkhead line and maintenance path. The maintenance path, also referred to as the 'Hardpack' is defined in Sec. 34-3 of the Town code as "The sand road west of the Erosion Control Line used by public safety and other authorized vehicles, pursuant to section 90-60.1(5) of the Town Code of Ordinances."

Relating to the ocean bulkhead line, Article IV, Division 2 of the Town Code specifically states the following within Section 14:

Sec. 14-87. - Construction east of line. It shall be unlawful for any person to construct any groin, bulkhead, seawall, jetty, breakwater or other protective work or to place any permanent or temporary structure of any nature whatsoever east of the ocean bulkhead line. It shall also be unlawful for any person to repair, extend, alter or replace any existing structure lying east of the ocean bulkhead line.

Sec. 14-88. - Construction west of line. Except as provided in section 90-187 no structure of any nature whatsoever may be erected within 20 feet west of the ocean bulkhead line and it shall be unlawful to repair, extend, alter or replace any existing structure lying within 20 feet west of the ocean bulkhead line which is not permitted under the provisions of section 90-187.

Sec. 14-89. - Vehicles east of line. It shall be unlawful for any person to drive, park, store or leave unattended any vehicle east of the ocean bulkhead line. In case of an emergency, the Town manager may



grant temporary permission for vehicular access, upon such terms and conditions as he shall deem appropriate.

Additionally, Sec. 90-60 of the Town code addresses construction adjacent to the ocean bulkhead line and states the following:

90-60.1 Ocean bulkhead lines are established in section 14-86 and the following regulations shall control construction adjacent thereto:

- (1) No permit shall be issued for the construction of any habitable, fully-enclosed structure east of the ocean bulkhead line.
- (2) No permit shall be issued for the repair, extension, alteration or replacement of any habitable, fully-enclosed structure east of the ocean bulkhead line.
- (3) No permit shall be issued for the construction of any habitable, fully enclosed structure closer than 20 feet to the west of the ocean bulkhead line.
- (4) No permit shall be issued for the repair, extension, alteration or replacement of any habitable, fully enclosed structure lying within 20 feet to the west of the ocean bulkhead line.
- (5) All properties east of Collins Avenue which upon redevelopment or expansion of habitable, fully enclosed structures require a permit from the town shall be required to provide an access easement to the town granting the perpetual use of the hardpack to the public, provided that the development creates an impact on public safety and the need for the easement is proportional to the impact created. The hardpack is defined as the sand road west of the Erosion Control Line used by public safety vehicles. Each access easement agreement shall be in a form acceptable to the town manager and approved as to legal sufficiency by the town attorney and shall contain a signed and sealed boundary survey and legal description of the easement area.

3) Coastal Construction Control Line: The CCCL Program is an integral component of the state's Beach and Shore Preservation Act pursuant to Part I of Chapter 161, F.S. Per FDEP, the program regulates and protects Florida's beaches and dunes from imprudent construction that could jeopardize the beach/dune system, accelerate erosion, threaten upland structures and property and interfere with public beach access while allowing reasonable use of private property. The CCCL program is administered through the FDEP. Other than a few limited exceptions, all development seaward of the CCCL requires a permit from FDEP. The CCCL permitting criteria is contained in F.A.C. 62B-26 through 56. Within the Town the CCCL runs roughly through the middle of the developable portions of the properties that fall east of Collins Avenue, this line is also shown on Exhibit C. Beach Aerial with ECL, Bulkhead and CCCL Delineations.

As stated on the FDEP website "the Coastal Construction Control Line defines that portion of the beach and dune system subject to severe fluctuations based on a 100-year storm event and establishes the landward limit of jurisdiction of the Department of Environmental Protection along sandy beaches of the state which front on the Gulf of Mexico, the Atlantic Ocean and the Straits of Florida. Unless otherwise exempt; a permit is required from FDEP for construction and excavation activities seaward of the CCCL. The CCCL is not a seaward limit for construction of upland structures (as in a setback line), but is an area where special siting and design considerations are necessary to protect the beach and dune system, proposed or existing structures, adjacent properties, public beach access, native salt-tolerant coastal vegetation and marine turtles."





There are seven platted right of ways that run east to the ECL, these are 96<sup>th</sup>, 95<sup>th</sup>, 94<sup>th</sup>, 92<sup>nd</sup>, 90<sup>th</sup>, 89<sup>th</sup> and 88<sup>th</sup> streets. The improved roadways end near the ocean bulkhead line with unimproved paths that continue and crossover the dune and provide public access to the beach. To limit impacts to the dune and dune vegetation, there are a total of sixteen dune cross-over pathway locations that have been established within the Town, seven of these cross-overs correspond to the termination of the platted public right-of-ways referenced above and another one is in front of the Town Community Center providing public access to the beach. Although the remaining cross-overs begin on private properties, the established 'hardpack' maintenance path provides public access to the beach on these cross-overs as well. Creation or relocation of a dune cross-over requires a CCCL permit from the FDEP and notification to the Town.

In addition to the Hardpack maintenance path there is also a narrower walking path along the crest of the dune. This foot path has a coquina crushed shell base and post and rope edging to protect adjacent vegetation from foot traffic. This post and rope fencing also abuts the established maintenance path to block foot traffic from entering into the vegetated dune. The post and rope fencing is maintained by the Town.

To summarize, development on the properties east of Collins Avenue is subject to the FDEP CCCL permitting program, development within these properties adjacent to and east of the ocean bulkhead line is highly restricted through the Town code –the landward side of the dune and the public maintenance path falls within this area-and eastward of the ECL the dune and beach system is state owned and maintained by the County.

#### **BEACH AND DUNE FUNCTIONS**

In addition to the recreational functions, the beach and dune system protects upland properties from storm damage and provides habitat for plants and animals. Dunes block storm surge and absorb wave energy; vegetated dunes minimize erosion and accrete sand and enhance beautification. Impacts to dunes and dune vegetation are regulated by the State of Florida through the CCCL program. The CCCL program directs development away from the dunes, protects dune vegetation and regulates the relocation of sand within the permitted project area. The CCCL program also ensures that any relocated sand or imported sand is compatible with the existing beach sand.

The following definitions are contained in F.A.C. 62B-55.002:

- (2) "Beach" means the zone of unconsolidated material that extends landward from the mean low water line to the place where there is a marked change in material or physiographic form, or to the line of permanent vegetation, usually the effective limit of storm waves.
- (9) "Dune" means a mound or ridge of loose sediments, usually sand-sized, lying landward of the beach and deposited by any natural or artificial mechanism.
- (10) "Frontal dune" means the first natural or man-made mound or bluff of sand which is located landward of the beach and which has sufficient vegetation, height, continuity and configuration to offer protective value.

To strengthen protection for the beach and dune system, Sec. 34-2 of the Town Code states "It is hereby declared and determined that preserving and enhancing the quality of the Town's beaches is essential to serve and benefit the town's residents and visitors. The chemical and physical composition of beach sand must not interfere with the health, safety or welfare of the public." The Town has also installed 'diverter' dunes at the ocean-side ends of the beach access pathways at 96<sup>th</sup> street and the cross-over located between 90<sup>th</sup> and 92<sup>nd</sup> street (adjacent to the Surfclub development). Diverter dunes



are small triangular shaped dunes structures created within the seaward side openings of the beach access paths designed to impede and slow the velocity of the storm surge entering the access way opening. The Town is exploring opportunities to install additional diverter dunes at other access pathway openings.

FDEP also administers the Beaches, Inlets and Ports Program (BIPP). The BIPP program permits beach renourishment projects and piers and per FDEP, “projects that generally are below the mean high water line and extend into the sovereign submerged lands and are likely to affect the distribution of sand along the beach.”

### FLORA AND FAUNA CONSIDERATIONS

Florida’s sandy beaches are nesting sites for several species of threatened or endangered marine turtles. Turtle nesting season runs from May 1 to October 31 in the County. Activities that interfere with the movement of turtles up or along the beach, result in a change in the basic character of the beach itself, or result in improper lighting, can inhibit the successful nesting of turtles. The marine turtles listed below in Table 1. Protected Marine Turtle Species in Florida; are protected under the Federal Endangered Species Act of 1973 and Florida’s Marine Turtle Protection Act, F.S. 379.2431.

Florida Statutes restrict the take, possession, disturbance, mutilation, destruction, selling, transference, molestation, and harassment of marine turtles, nests or eggs. Protection is also afforded to marine turtle habitat. Additionally, specific authorization from the Florida Fish and Wildlife Conservation Commission (FWC) staff is required to conduct scientific, conservation, or educational activities that directly involve marine turtles in or collected from Florida, their nests, hatchlings or parts thereof, regardless of applicant’s possession of any federal permit.

Table 1. Protected Marine Turtle Species in Florida

Green sea turtle	<i>Chelonia mydas</i>	Federally-designated Threatened
Hawksbill sea turtle	<i>Eretmochelys imbricata</i>	Federally-designated Endangered
Kemp’s ridley sea turtle	<i>Lepidochelys kempii</i>	Federally-designated Endangered
Leatherback sea turtle	<i>Dermochelys coriacea</i>	Federally-designated Endangered
Loggerhead sea turtle	<i>Caretta caretta</i>	Federally-designated Threatened

Historically hatchling turtles were guided to the ocean by an instinct to travel away from the dark silhouettes of the dune vegetation and toward the brightest horizon which was the light from the sky reflecting off the ocean. Many coastal areas are highly populated with artificial lights near the beach that can deter females from nesting and disorient hatchling sea turtles. When disoriented, the hatchlings travel inland toward the artificial lights where they often die from dehydration, entrapment predation, or sometimes crawling onto roads where they are run over by cars.

FDEP and FWC dually review permits under the CCCL program for coastal construction under Chapter 62B, F.A.C. for affects to marine turtles. FDEP also regulates mechanized beach cleaning under the Florida Beach and Shore Preservation Act, F. S. 161. In order for beach cleaning to occur during nesting season, FWC and FDEP have developed special conditions to protect marine turtles, their nests and hatchlings.

To protect turtle hatchlings from disorientation the Town code established lighting standards for new and existing development in Sec. 34-84. - *Lighting Standards for Coastal Construction Activities*, which states the following:



- (a) *Lighting standards for new development.* It is the policy of the Town of Surfside that no artificial light shall illuminate within direct line-of-sight of the beach that has potential to interfere with turtle nesting. To meet this intent, new development construction within line-of-sight of the beach shall comply with the following:
- (1) Exterior artificial light fixtures shall be designed and positioned so that:
    - a. The point source of light or any reflective surface of the light fixture is not directly visible from the beach;
    - b. Areas seaward of the frontal dune are not directly or indirectly illuminated; and
    - c. Areas seaward of the frontal dune are not cumulatively illuminated.
  - (2) Exterior artificial light fixtures within direct line-of-sight of the beach are considered appropriately designed if:
    - a. Completely shielded downlight only fixtures or recessed fixtures having low wattage (i.e., 50 watts or less) bug type bulbs and non-reflective interior surfaces are used. Other fixtures that have appropriate shields, louvers, or cut-off features may also be used if they are in compliance with subsection (a)(1)a.—c. above; and
    - b. All fixtures are mounted as low in elevation as possible through use of low-mounted wall fixtures, low bollards, and ground-level fixtures.
  - (3) Floodlights, uplights or spotlights for decorative and accent purposes that are directly visible from the beach, or which indirectly or cumulatively illuminate the beach, shall not be used.
  - (4) Exterior lights used expressly for safety or security purposes shall be limited to the minimum number and configuration required to achieve their functional role(s). The use of motion detector switches that keep lights off except when approached and that switch lights on for the minimum duration possible are preferred.
  - (5) Only low intensity lighting shall be used in parking areas within line-of-sight of the beach. Such lighting shall be:
    - a. Set on a base which raises the source of light no higher than 48 inches off the ground or higher if necessary to conform with life safety codes; and
    - b. Positioned or shielded so that the light is cast downward and the source of light or any reflective surface of the light fixture is not visible from the beach and does not directly or indirectly illuminate the beach.
  - (6) Parking areas and roadways, including any paved or unpaved areas upon which motorized vehicles will park or operated, shall be designed and located to prevent vehicular headlights from directly or indirectly illuminating the beach.
  - (7) Vehicular lighting, parking area lighting, and roadways lighting shall be shielded from the beach through the use of ground-level barriers. Ground-level barriers must not interfere with marine turtle nesting or hatchling emergence, or cause short-or long-term damage to the beach/dune system.
  - (8) Tinted glass shall be installed on all windows and glass doors of single and multi-story structures within line-of-sight of the beach.
  - (9) Use of appropriately shielded low pressure sodium vapor lamps and fixtures shall be preferred for high-intensity lighting applications such as lighting parking areas and roadways, providing security, and similar applications.
  - (10) Temporary lighting of construction sites during the marine turtle nesting season shall be restricted to the minimal amount necessary and shall incorporate all of the standards of this section.
  - (11) Properties that abut the beach which have signage facing the beach or in the line-of-sight of the beach, including building identification signs, shall not be illuminated during the nighttime hours of the nesting season. Properties that face the beach but do not abut the beach which have signage visible from the beach shall be properly shielded with downward facing fixtures where the chosen background does not reflect the light source and signs that are lit internally must illuminate only the text and have the appropriate shielding, and not reflect the light source.



- (b) *Lighting standards for existing development.* It is the policy of the Town of Surfside that no artificial light shall illuminate any area within direct line-of-sight of the beach that has the potential to interfere with turtle nesting. To meet this intent, within 12 months of the effective date of this article or when an existing development has begun renovations exceeding 50 percent of the tax assessed value of the structure as determined by the building official, an existing development shall be in compliance with the following:
- (1) Existing artificial light fixtures shall be repositioned, modified, or removed so that:
    - a. The point source of light or any reflective surface of the light fixture is not directly visible from the beach;
    - b. Areas seaward of the frontal dune are not directly or indirectly illuminated; and
    - c. Areas seaward of the frontal dune are not cumulatively illuminated.
  - (2) The following measures shall be taken to reduce or eliminate the negative effects of existing exterior artificial lighting:
    - a. Reposition fixtures so that the point source of light or any reflective surface of the light fixture is no longer visible from the beach;
    - b. Replace fixtures having an exposed light source with fixtures containing recessed light sources or shields;
    - c. Replace traditional light bulbs with bug type bulbs not exceeding 50 watts or any alternative lighting source as defined herein;
    - d. Replace nondirectional fixtures with directional fixtures that point down and away from the beach;
    - e. Replace fixtures having transparent or translucent coverings with fixtures having opaque shields covering an arc of at least 180 degrees and extending an appropriate distance below the bottom edge of the fixture on the seaward side so that the light source or any reflective surface of the light fixture is not visible from the beach;
    - f. Replace pole lamps with low-profile, low-level luminaries so that the light source or any reflective surface of the light fixture is not visible from the beach;
    - g. Replace incandescent, fluorescent, and high intensity lighting with the lowest wattage low pressure sodium vapor lighting possible for the specific application or an alternative lighting source;
    - h. Plan or improve vegetation buffers between the light source and the beach to screen light from the beach;
    - i. Construct a ground level barrier to shield light sources from the beach. Ground-level barriers must not interfere with marine turtle nesting or hatchling emergence, or cause short- or long-term damage to the beach-dune system;
    - j. Permanently remove or permanently disable any fixture that cannot be brought into compliance with the provisions of these standards.
  - (3) Properties that abut the beach which have signage facing the beach or in the line-of-sight of the beach, including building identification signs, shall not be illuminated during the nighttime hours of the nesting season. Properties that face the beach but do not abut the beach which have signage visible from the beach shall be properly shielded with downward facing fixtures where the chosen background does not reflect the light source and signs that are lit internally must illuminate only the text and have the appropriate shielding, and not reflect the light source.
  - (4) One or more of the following measures shall be taken to reduce or eliminate the negative effects of interior light emanating from doors and windows within line-of-sight of the beach:
    - a. Apply window tint or film that meets the standards in the definition of "tinted or filmed glass";
    - b. Rearrange lamps and other moveable fixtures away from windows;
    - c. Use window treatments (e.g., blinds, curtains) to shield interior lights from the beach; and/or
    - d. Turn off unnecessary lights.



Additionally, Sec. 34-83. - *Prohibited Activities Disruptive to Marine Turtles*, includes the following provisions:

(a) *Prohibited activities*. The following activities involving direct illumination of portions of the beach are prohibited on the beach at nighttime during the nesting season for the protection of nesting marine turtle females, nests and hatchlings:

- (1) The operation of all motorized vehicles, except emergency and law enforcement, or emergency beach maintenance vehicles or those permitted on the beach for marine turtle's conservation and/or research.
- (2) The building of campfires or bonfires.
- (3) Fireworks displays, except those that have town special event permits and, if applicable, a FDEP permit; however, nothing in this article shall prohibit the town's July 4th fireworks display.
- (4) Special events pursuant to chapter 35, article 1, of the town Code, unless allowed first by permit issued by FDEP.

The Town also affords protection for turtle nesting and hatchlings through the following Town codes: Sec. 86-30. - *Limitations on Beach Furniture* and Sec. 86-31. - *Beach Furniture Permit Requirements*, specifying that beach furniture shall not inhibit access to the public beach, nor obstruct reasonable access on the beach for pedestrians and emergency vehicles, nor impact native vegetation, nor affect sea turtles or other wildlife; and requiring a hotel beach furniture operator to procure a local business tax receipt and comply with the regulations of section 70-41 of the Town of Surfside Code and all required licenses or permits from the County, the State of Florida and federal entities.

Predation or destruction of nests can occur by raccoons or uncontrolled dogs. A comprehensive beach maintenance program should include the control of these animals. The Town does not allow dogs on the public beach as specified in Code Sec. 10-33 stating "No dog, whether on a leash or without a leash, muzzled or unmuzzled, shall be permitted at any time on any public beach in the town. Nothing in this section shall be construed to apply to any deaf or hard of hearing person, totally or partially disabled person, or physically disabled person accompanied by a guide dog or service dog specially trained for the purpose."

Throughout Florida a multitude of citizen volunteers walk beaches during nesting season to report on crawls, nesting activity and nest locations. FWC's Fish and Wildlife Research Institute (FWRI) coordinates nesting beach survey programs around the state and the FWRI staff members coordinate the Florida Sea Turtle Stranding and Salvage Network (FLSTSSN), which is responsible for gathering data on dead or debilitated (i.e., stranded) sea turtles found in Florida. The beach survey program is administered on behalf of FWRI locally by the County and the Town's Park and Recreation Department staff maintain communication with the County staff.

Sea Oats (*Uniola paniculata*) and Seagrapes (*Coccolobis uvifera*) are considered the most common dune vegetation. These are protected under F.S. 161.242 which states "Harvesting of sea oats and sea grapes prohibited; possession prima facie evidence of violation.

- (1) The purpose of this section is to protect the beaches and shores of the state from erosion by preserving natural vegetative cover to bind the sand.
- (2) It is unlawful for any purpose to cut, harvest, remove, or eradicate any of the grass commonly known as sea oats or *Uniola paniculata* and *Coccolobis uvifera* commonly known as sea grapes from any public land or from



any private land without consent of the owner of such land or person having lawful possession thereof. Possession of either *Uniola paniculata* or *Coccolobis uvifera* by other than the owner of such land shall constitute prima facie evidence of violation of this section. However, licensed, certified nurserymen who grow any of the native plants listed in this section from seeds or by vegetative propagation are specifically permitted to sell these commercially grown plants and shall not be in violation of this section of the law if they do so, as it is the intent of the law to preserve and encourage the growth of these native plants which are rapidly disappearing from the state.”

The FDEP has established *Sea Grape Trimming Guidelines* for maintenance trimming of sea grapes, any trimming outside the established guidelines, or the need to remove a tree, will require a permit from the FDEP.

There are several listed plant species that may make their home in the sandy dune habitat of south Florida. These include but are not limited to the plants listed below in Table 2. Listed Dune Plant Species

Table 2. Listed Dune Plant Species

Scientific name	Common Name	Status
<i>Coccothrinax argentata</i>	Florida Silver Palm	Threatened-State
<i>Ernodea cokeri</i>	Coker's Beach Creeper	Endangered-State
<i>Heliotropium gnaphalodes</i>	Sea Rosemary; Sea Lavender	Endangered-State
<i>Leucothrinax morrisii</i>	Brittle Thatch Palm	Threatened-State
<i>Okenia hypogaea</i>	Beach Peanut	Endangered-State
<i>Scaevola plumieri</i>	Beachberry; Inkberry; Gullfeed	Threatened-State

There are several aggressive invasive plant species that can flourish in the sandy dune habitat and disrupt native vegetative communities. In particular the Hawaiian half-flower or beach naupaka (*Scaevola taccada*) is a common invasive exotic dune plant plaguing south Florida beaches. The plant's shallow roots and fragile stems are easily destroyed in high winds or storms making it far less effective in dune stabilization than sea oats and other native species. This aggressive plant will colonize and block out native vegetation. Brazilian-pepper trees (*Schinus terebinthifolius*) and Australian-pine trees (*Casuarina equisetifolia*) can also infest and disrupt dune vegetative communities. All three of these species are recognized as Category I invasive species by the Florida Exotic Pest Plant Council. A Category I species is defined as “Invasive exotics that are altering native plant communities by displacing native species, changing community structures or ecological functions, or hybridizing with natives.”

For the landward side of the dune on the private properties, when these properties pursue development permits the Town code in Section 90-90.3 states “As a condition of approval, the property owner shall remove all invasive exotic species from the property prior to final approval.” The Town also regulates native vegetation through the following codes: Sec. 90-86 “All buildings, structures, new developments, redevelopment and changes of use requiring a permit shall require submittal of a landscape and irrigation plan”; and Sec. 90-97 “Tree removal/relocation permits and native plant community vegetation removal permits are required prior to the removal/relocation of trees, specimen trees, or any vegetation, pursuant to section 24-60 of the County Code. Also, tree abuse including hack racking is prohibited within the town. Tree protection barriers are required during site development to preserve existing and relocated trees. The County Department of



Environmental Resources Management (DERM) is responsible for administering and enforcing these provisions.” As a component of a project specific CCCL permit the FDEP may require dune plantings and the removal of invasive vegetation on the dune system adjacent to a development project.

The Town partnered with the not-for-profit Youth Environmental Alliance (YEA), on a one-time dune planting project along with the removal of the invasive Scaevola plant.

## RECOMMENDATIONS

The Town’s capacity to directly manage or impact the beach and dune system activity is limited due to their limited ownership; however, below are some best management practices (BMPs) that the Town can pursue to provide protection for sea turtles and the dune system.

Control Light Pollution: Turning out unnecessary lights is the simplest, most effective and most energy efficient solution to avoid negative impacts to wildlife from light pollution. However, this is not a feasible solution where lighting is required for safety and security. The FWC wildlife lighting criteria specifies that a fixture, lamp, or community lighting must be able to satisfy three (3) conditions. These conditions are: 1) keep it low, 2) keep it shielded and 3) keep it long. These are described as follows:

- “Keep it low” means that the fixtures must be able to be mounted as low as possible and still be appropriate for the needed purpose, must be able to accept lamps that produce only the lumens necessary for the needed purpose and bulb must produce the lowest lumens necessary for the needed purpose.
- “Keep it shielded” means that the: fixture must meet or exceed full cut-off (meaning the fixture blocks light from shining at an upward angle), must be able to shield the bulb, lamp, or glowing lens from the beach, wildlife corridor, or protected natural area (when mounted appropriately) and that the bulb must be able to be used in an FWC approved fixture.
- “Keep it long” means that the fixture must accept long wavelength bulbs. The acceptable long wavelength light is 560 nanometers (nm) while anything below 560 nm would be unacceptable.

The site plan review, CCCL and Town building permit processes ensure that new oceanfront lighting complies with the FDEP and FWC lighting criteria, the Town code compliance process can ensure that lighting remains in compliance. Lighting Surveys of beach facing properties can be conducted to identify any existing lighting that may need to be brought into compliance.

Provide Public Education: Many visitors to the Town are unfamiliar with beach and dune habitat and marine turtles. Educational signage at public beach access points can inform visitors. Information on the Town website and in the Surfside Gazette can reach and inform residents and visitors alike. The Town can utilize useful education material on turtles from <http://myfwc.com/education/wildlife/sea-turtle/>. The Town can publicize the FWC Wildlife Alert phone number (1-888-404-FWCC) to inform people where to report information on injured or stranded turtles.

Beach Furniture Compliance: The Town code compliance process can ensure that beach furniture placement remains in compliance and that any hotel or condominium that plans to put beach furniture on the beach obtain the required Town permit.



**Protect Native Dune Vegetation:** Native dune species help to trap and hold sand and inhibit erosion. Invasive dune species can crowd out and impede the growth of native species and often have shallow roots and fragile stems that are easily destroyed in high winds or storms making them ineffective in dune stabilization. The removal of invasive species and installation of native dune species restores the dune's natural functions and biodiversity. The following measures protect and enhance native dune vegetation and the dune structure:

- Remove invasive vegetation. Coordinate with the County to ensure invasive/aggressive vegetation is removed from the state owned portions of the dune. Conduct the follow-up inspection on private properties to ensure invasive species are completely removed when required through the issuance of a Town development permit. On the platted right of ways and Town-owned properties all invasive vegetation should be removed with a routine inspection and follow-up eradication program established.
- Do not leave removed invasive vegetation on-site. Removed invasive exotic vegetation shall be completely removed (including root systems) and properly disposed of; do not shred or chip and leave on site.
- Protect native vegetation during exotic plant removal. To ensure native species are not collaterally damaged during the removal of non-natives, barriers should be installed prior to the removal of invasives.
- Immediately replant cleared areas. To impede re-infestation of aggressive non-native vegetation, any cleared dune area should immediately get installed with diverse native materials. See attached DEP brochure for a list of native dune species. Exhibit D. Recommended Florida Native Beach and Dune Plants for Beachfront Properties and Dune Restoration.
- Sea oats planting. Coordinate with FDEP and the County and support sea oat planting programs and sponsor a Town planting program.
- Limit dune crossovers. Coordinate with FDEP when CCCL permits are sought to ensure no additional dune crossovers are permitted and constructed.
- Maintain the rope and post sand fencing. To impede foot traffic into the dune and the creation of additional unpermitted dune crossovers of convenience, routinely inspect and conduct or coordinate any needed repairs to the rope and post fencing system.

**Dune Management:** Develop a Town Dune Management program addressing vegetation, wildlife, lighting, maintenance and interagency coordination. Include information on which public and/or private entities currently conduct any beach or dune maintenance activities and what these are.

**Code Review:** Review the Town code to determine if amendments are needed to provide definitions or to strengthen beach and dune protection measures.

**Control Raccoons and Feral Cats:** The raccoon is a native species with a year-round hunting and trapping season in Florida. Raccoons are known to carry a wide variety of diseases and parasites and they destroy marine turtle nests. Per Florida Rule 68A-9.010 if a raccoon is a nuisance, it can be captured or taken as a nuisance animal using legal and humane methods. The best way to avoid raccoons is to not attract them, do not feed raccoons. Per F.A.C.68A-4.001, placing food outside attracts wild animals and intentional feeding of raccoons is illegal. Ensure trash cans and dumpsters are not accessible to raccoons and are frequently emptied. When raccoons are reported as frequenting the beach, professional firms can be hired that lawfully remove them. Large populations of feral cats can impact native dune wildlife species, management plans should





implement spay and neutering programs for feral cats to ensure population levels are maintained. Professional firms can be hired that can humanly capture injured or unhealthy cats for appropriate treatment and adoption if feasible.

Maintain Interagency Communication: Multiple agencies play roles in the ownership, management, maintenance, protection and restoration of the beach and dune. The Town does and should continue to maintain effective communication with these agencies to facilitate effective management.

FWC's Fish and Wildlife Research Institute (FWRI) coordinates nesting beach survey programs around the state, volunteers ensure crawls are identified and nests are marked as soon as they are established. The Town maintains communication with the local ongoing beach survey program to best understand local nesting activity, locations and beach conditions.

The County conducts beach maintenance including trash and debris removal. In addition to being unsightly, trash on the beach can entrap, entangle or be ingested by marine turtles and be detrimental. The beach maintenance program should ensure debris does not easily escape from trash receptacles and that loose debris is picked-up. On occasion tar washes onto the beach; this can be detrimental to hatchlings. The beach maintenance program should include removal and proper disposal of any tar that has washed ashore. Compacting beach sand can also be detrimental to marine turtle nesting, the County ensures beach cleaning firms adhere to FWC requirements relating to tire pressure. Other than for life safety, vehicles should be prohibited from the beach. The Town coordinates with the County to designated established access points for emergency and other vehicles to prohibit vehicles from destroying the structure of the existing dunes in other locations. When applicable, mobi-mats should be used for beach access for other special purpose needs.

FDEP produces the annual critically eroded beaches report and administers the CCCL permitting program. Coordinate with FDEP when CCCL permits are sought to ensure no additional dune crossovers are permitted and constructed.

Beach renourishment is a region-wide multi-agency program including Federal, State, County and Local agencies with the Army Corps of engineers taking the lead role. The Town maintains contact with the Corps and with the County to ensure they are apprised of all proposed or pending activities and to ensure the Town's needs and concerns are considered in project planning and implementation.



## ATTACHMENTS

Exhibit A. Aerial photograph of Surfside 1970 and 1984 and 1999

Exhibit B. Critically Eroded Beaches Map

Exhibit C. Beach Aerial with ECL, Ocean Bulkhead Line and CCCL Delineations

Exhibit D. Recommended Florida Native Beach and Dune Plants for Beachfront Properties and Dune Restoration



**Calvin, Giordano & Associates, Inc.**  
EXCEPTIONAL SOLUTIONS™

**Exhibit A. 1970, 1984, and 1999 Aerial photographs of Surfside**

1970 Aerial photo of Surfside from the University of Florida Map and Imagery Library (before beach renourishment)



1984 Aerial Photo of Surfside from the University of Florida Map and Imagery Library (after beach renourishment)



February 1999

December 1999

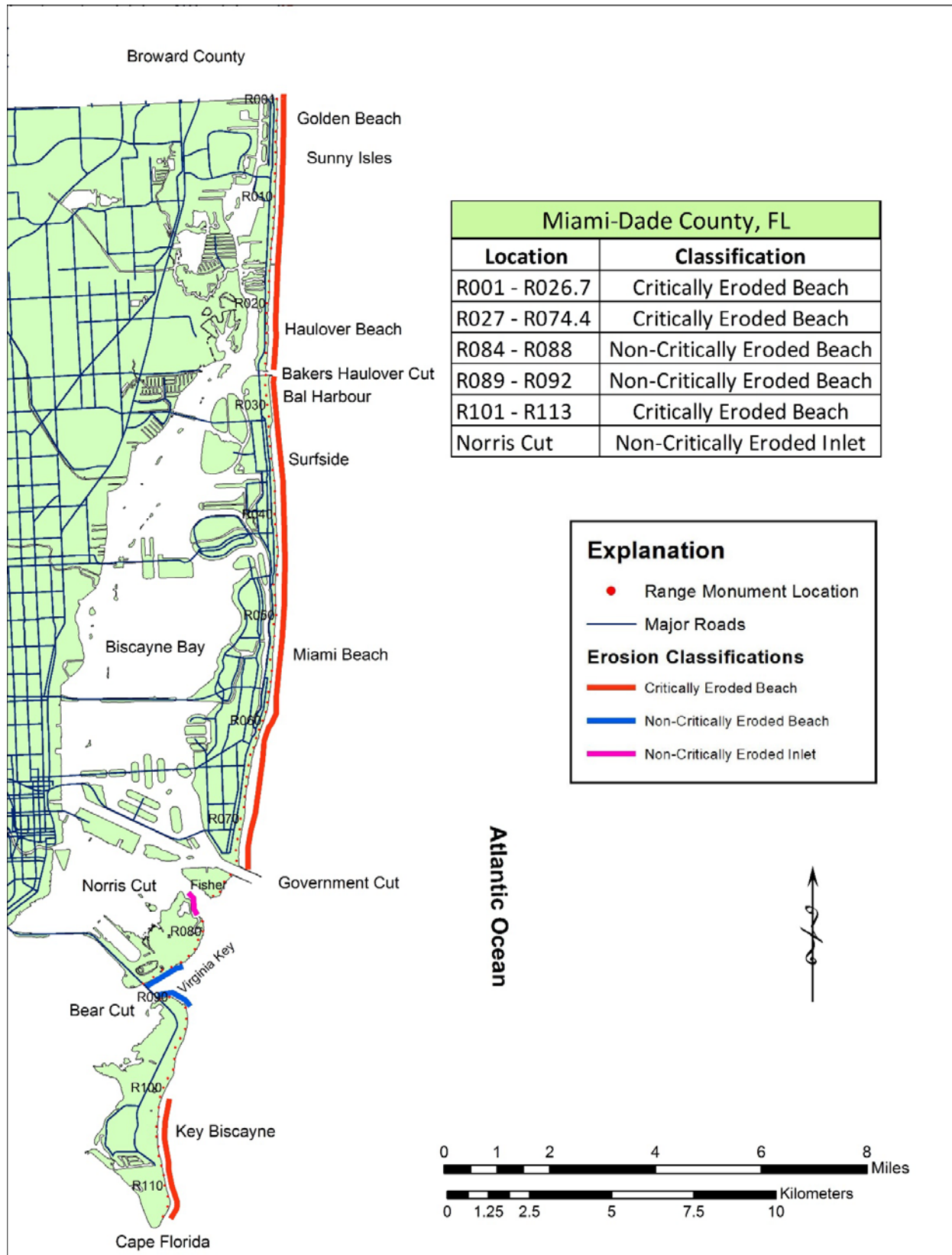


Aerial Photos of Surfside from Google Earth



**Calvin, Giordano & Associates, Inc.**  
EXCEPTIONAL SOLUTIONS™

Exhibit B. Critically Eroded Beaches Map





LOCATION & KEY MAP

NO	DATE	REVISION	BY

FIELD BOOK:  
PAGE:  
DRAWN: SMW  
DATE: 9/15/2018  
CHECKED:  
DATE:



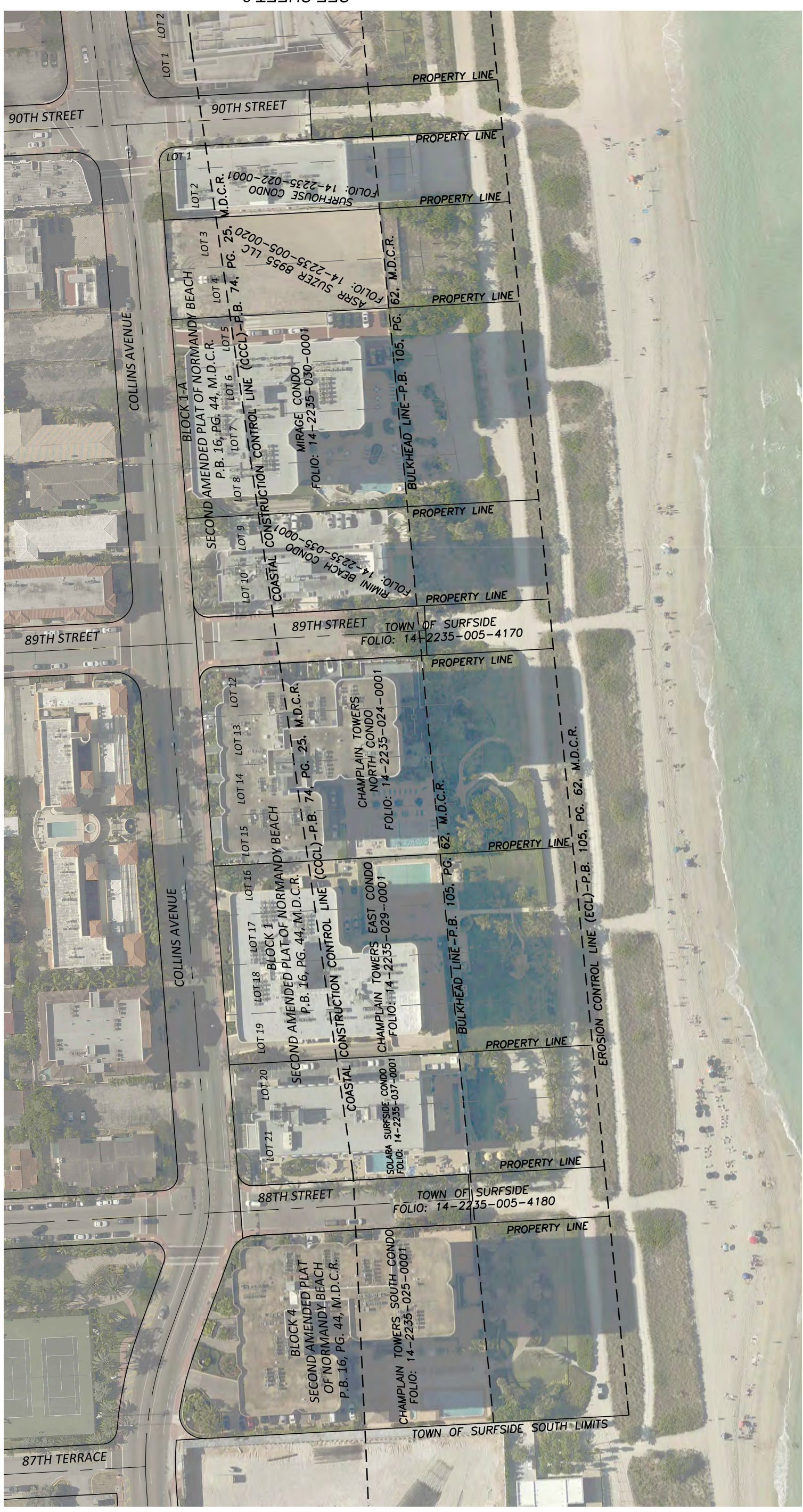
**Calvin, Giordano & Associates, Inc.**  
EXCEPTIONAL SOLUTIONS™  
1800 Eller Drive, Suite 600, Fort Lauderdale, Florida 33316  
Phone: 954.921.7781 • Fax: 954.921.8807

**DUNE SURVEY  
&  
BEACH MANAGEMENT PLAN  
TOWN OF SURFSIDE**

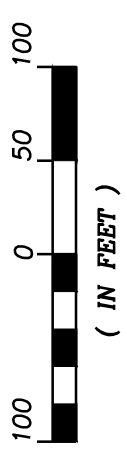
**BEACH FRONT  
PROPERTY MAP**

SCALE: N/A  
PROJECT No: 18-9942  
WORK AUTHORIZATION NO.: 110

Exhibit C. Beach Aerial with ECL, Bulkhead Line and CCCL Delineations



SEE SHEET 3

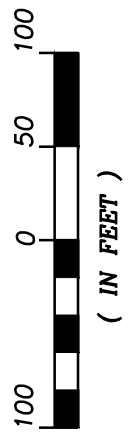


FIELD BOOK:		SHEET	
PAGE:		SCALE 1"=100'	18-9942
DRAWN: SMW		PROJECT NO	2 OF 5
DATE: 9/15/2018		WORK AUTHORIZATION NO:	110
CHECKED:		<b>DUNE SURVEY &amp; BEACH MANAGEMENT PLAN</b> <b>TOWN OF SURFSIDE</b>	
DATE			
NO	DATE	<b>BEACH FRONT PROPERTY MAP</b>	
REVISION	BY		



SEE SHEET 4

SEE SHEET 2



NO	DATE	REVISION	BY

**Calvin, Giordano & Associates, Inc.**  
 EXCEPTIONAL SOLUTIONS™  
 1800 Eller Drive, Suite 600, Fort Lauderdale, Florida 33316  
 Phone: 954.921.7781 • Fax: 954.921.8807

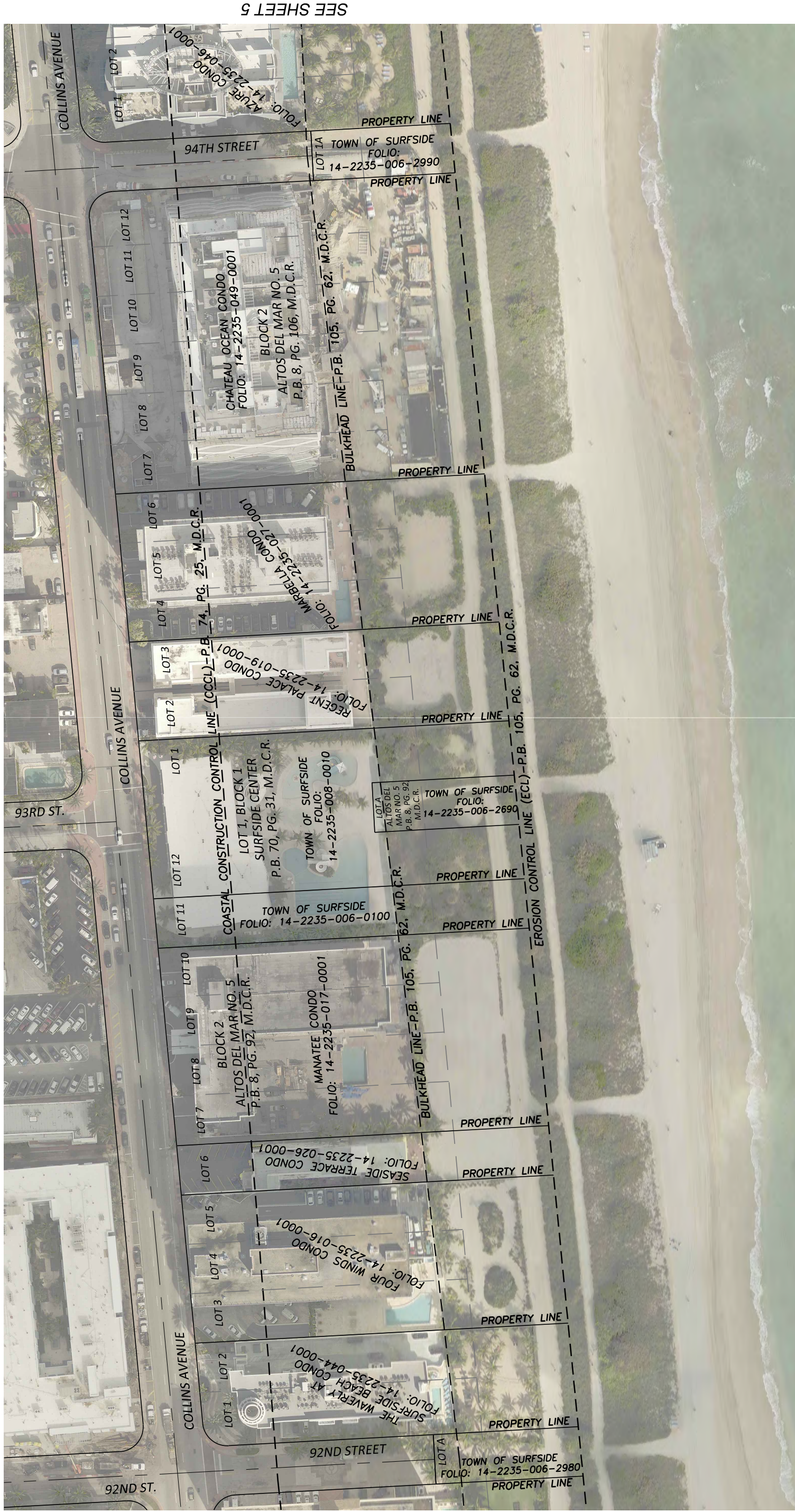
**DUNE SURVEY  
 &  
 BEACH MANAGEMENT PLAN  
 TOWN OF SURFSIDE**

**BEACH FRONT  
 PROPERTY MAP**

SCALE	1"=100'	SHEET	3 OF 5
PROJECT NO.	18-9942	WORK AUTHORIZATION NO.	110

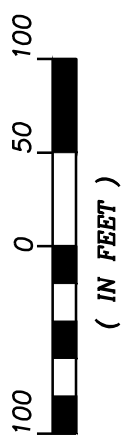


Exhibit C. Beach Aerial with ECL, Bulkhead Line and CCCL Delineations



SEE SHEET 3

SEE SHEET 5



NO	DATE	REVISION	BY



**Calvin, Giordano & Associates, Inc.**  
**EXCEPTIONAL SOLUTIONS™**  
 1800 Eller Drive, Suite 600, Fort Lauderdale, Florida 33316  
 Phone: 954.921.7781 • Fax: 954.921.8807

**DUNE SURVEY  
&  
BEACH MANAGEMENT PLAN  
TOWN OF SURFSIDE**

SCALE	1"=100'	SHEET	4 OF 5
PROJECT NO	18-9942		
WORK AUTHORIZATION NO:	110		

Exhibit C. Beach Aerial with ECL, Bulkhead Line and CCCL Delineations



SEE SHEET 4

NO	DATE	REVISION	BY

**Calvin, Giordano & Associates, Inc.**  
**EXCEPTIONAL SOLUTIONS™**  
 1800 Eller Drive, Suite 600, Fort Lauderdale, Florida 33316  
 Phone: 954.921.7781 • Fax: 954.921.8807

**DUNE SURVEY  
 &  
 BEACH MANAGEMENT PLAN  
 TOWN OF SURFSIDE**

**BEACH FRONT  
 PROPERTY MAP**

SCALE	1"=100'
PROJECT NO	18-9942
WORK AUTHORIZATION NO:	110

SHEET  
**5 OF 5**

Exhibit D.

**Recommended Florida Native Beach and Dune Plants for Beachfront Properties and Dune Restoration**

**Notes:**

1. Salt tolerance: high (tolerant of heavy and frequent salt spray, salt water flooding); moderate (tolerant of salt spray but subject to leaf burn from heavy salt spray or root damage from flooding); low (tolerant of salt laden air and short duration, infrequent salt water flooding but usually in protected areas).
2. Region: NW = northwest Florida Panhandle; SW = Pinellas to Collier counties; NE = Nassau to Volusia counties; SE = Brevard to Dade counties; Keys = restricted to the Florida Keys and adjacent Dade and Monroe County islands. Regions have primarily been determined by the historic distribution of the plant in Florida's coastal upland natural communities, not necessarily by the range of areas or habitats where the plant could survive.
3. Soil Moisture: moist (subject to flooding as within low dune swales); moderate (not subject to frequent flooding but not adapted to deepest sands or driest conditions; dry (adapted to deep sands, dune ridges, or well drained rocky soils); and variations for plants adapted across a range of conditions.

**References:**

1. Nelson, Gil. 2003. Florida's Best Native Landscape Plants: 200 readily available species for homeowners and professionals. Florida Association of Native Nurseries. University Presses of Florida.
2. Williams, M.J. 2007. Native Plants for Coastal Dune Resotration: what, when and how for Florida. USDA, NRCS, Brooksville Plant Materials Center, Brooksville, Florida.
3. Wunderlin, Richard P., etal. Plant Atlas. University of South Florida ([www.plantatlas.usf.edu](http://www.plantatlas.usf.edu)).

**Scientific Name**

**Common Name**

**Salt tolerance**

**Region**

**Soil Moisture**

**(NW/SW/NE/SE/Keys)**

**Dune Grasses**

Distichlis spicata	salt grass	high	all	moist
Muhlenbergia capillaris var. filipes	Gulf hairawn muhly grass	moderate	all	moderate
Panicum amarum	bitter panic grass	high	all	dry
Panicum vaginatum	seashore paspalum	high	all	moderate
Schizachyrium scoparium	coastal bluestem	high	all	moderate
Spartina patens	marshhay	high	all	moderate
Sporobolus virginicus	seashore dropseed	high	all	moist
Uniola paniculata	sea oats	high	all	dry

**Exhibit D  
Scientific Name**

<b>Scientific Name</b>	<b>Common Name</b>	<b>Salt tolerance</b>	<b>Region (NW/SW/NE/SE/Keys)</b>	<b>Soil Moisture</b>
<b>Groundcovers</b>				
<i>Borrichia arborescens</i>	sea oxeye	high	SW, SE, Keys	moist
<i>Borrichia frutescens</i>	sea oxeye	high	all	moist
<i>Ernodea littoralis</i>	golden beach creeper	high	SW, SE, Keys	moderate - dry
<i>Gaillardia pulchella</i>	blanket flower	moderate	all	dry
<i>Helianthus debilis</i>	East Coast dune sunflower	high	NE, SE, Keys	dry
<i>Helianthus debilis</i> spp. <i>cucumerifolius</i>	cucumber leaf dune sunflower	high	NW, SW	dry
<i>Helianthus debilis</i> ssp. <i>vestitus</i>	West Coast dune sunflower	high	SW	dry
<i>Hymenocallis latifolia</i>	beach spider lily	high	SW, NE, SE, Keys	moist - dry
<i>Ipomoea imperati</i>	beach morning glory	high	all	moderate - dry
<i>Ipomoea pes-caprae</i>	railroad vine	high	all	moderate - dry
<i>Iva imbricata</i>	beach elder	high	all	moist – dry
<i>Sesuvium portulacastrum</i>	sea purslane	high	all	moist - moderate
<i>Solidago sempervirens</i>	seaside goldenrod	high	NW, SW, NE, SE	moist – moderate
<i>Yucca filamentosa</i>	Adam’s needle	moderate	NW, SW, NE, SE	dry
<b>Shrubs</b>				
<i>Ardisia escallonioides</i>	marlberry	moderate	SW, SE, Keys	moderate
<i>Argusia gnaphalodes</i>	sea lavender	high	SE, Keys	dry
<i>Chrysobalanus icaco</i>	coco plum	moderate	SW, SE, Keys	moderate - dry
<i>Erythrina herbacea</i>	coral bean	low	all	moderate - dry
<i>Eugenia axillaris</i>	white stopper	low	SW, SE, Keys	moderate
<i>Eugenia foetida</i>	Spanish stopper	low	SW, SE, Keys	moderate
<i>Forestiera segregata</i>	Florida privet	low	SW, NE, SE, Keys	moist -moderate

**Exhibit D  
Scientific Name**

**Shrubs (continued)**

Scientific Name	Common Name	Salt tolerance	Region (NW/SW/NE/SE/Keys)	Soil Moisture
<i>Ilex vomitoria</i>	yaupon	moderate	SW, NE, SE, Keys	moderate - dry
<i>Myrica cerifera</i>	wax myrtle	moderate	all	moist - moderate
<i>Quercus geminata</i>	sand live oak	moderate	NW, SW, NE, SE	dry
<i>Quercus myrtifolia</i>	myrtle oak	moderate	NW, SW, NE, SE	dry
<i>Rapanea punctata</i>	myrsine	moderate	SW, SE, Keys	moist - dry
<i>Serenoa repens</i>	saw palmetto	high	all	moist - dry
<i>Suriana maritima</i>	bay cedar	high	SW, SE, Keys	dry
<i>Zamia pumila</i>	coontie	moderate	SW, NE, SE, Keys	dry

**Thorn/Scrub Plants**

<i>Agave decipiens</i>	false sisal	high	SW, SE, Keys	dry
<i>Caesalpinia bonduc</i>	gray nickerbean	moderate	SW, SE, Keys	moderate - dry
<i>Erythrina herbacea</i>	coral bean	low	all	dry
<i>Opuntia spp.</i>	prickly pears	high	all	moderate - dry
<i>Serenoa repens</i>	saw palmetto	high	all	moist - dry
<i>Sideroxylon tenax</i>	tough bully	low	NE, SE	dry
<i>Smilax auriculata</i>	earleaf catbrier	moderate	all	dry
<i>Ximenia Americana</i>	hog plum	low	NE, SE	dry
<i>Yucca aloifolia</i>	Spanish bayonet	high	all	dry
<i>Yucca filamentosa</i>	Adam's needle	moderate	NW, SW, NE, SE	dry
<i>Yucca gloriosa</i>	Moundlily yucca	moderate	NW, SW, NE	dry
<i>Zanthoxylum clava-hercules</i>	Hercules' club	moderate	NW, SW, NE, SE	dry
<i>Zanthoxylum fagara</i>	wild lime	moderate	SW, NE, SE, Keys	moderate - dry

Exhibit D.

Scientific Name	Common Name	Salt tolerance	Region (NW/SW/NE/SE/Keys)	Soil Moisture
<b>Trees</b>				
Acacia farnesiana	sweet acacia	moderate	all	moist - dry
Baccharis halimifolia	salt bush	high	all	moist - moderate
Bursera simauruba	gumbo limbo	moderate	SW, SE, Keys	moderate - dry
Capparis cynophallophora	Jamaica caper	moderate	SW, SE, Keys	dry
Celtis laevigata	hackberry	low	NW, SW, NE, SE	moist - moderate
Chrysophyllum oliviforme	satinleaf	moderate	SE, Keys	moderate - dry
Citharexylum spinosum	fiddleleaf	moderate	SE, Keys	dry
Coccoloba diversifolia	pigeon plum	high	SW, SE, Keys	moderate - dry
Coccoloba uvifera	sea grape	high	SW, SE, Keys	moderate - dry
Conocarpus erectus	buttonwood	high	SW, SE, Keys	moist - moderate
Cordia sebestana	Geiger tree	moderate	SW, SE, Keys	moderate - dry
Ficus aurea	golden fig	moderate	SW, SE, Keys	moderate
Ilex x. attenuata	East Palatka holly	low	NW, SW, NE, SE	moderate
Ilex cassine	dahoon holly	low	NW, SW, NE, SE	moist - moderate
Ilex opaca	American holly	low	NW, SW, NE, SE	moderate
Ilex vomitoria	yaupon holly	moderate	NW, SW, NE, SE	moderate - dry
Juniperus silicicola	southern red cedar	moderate	NW, SW, NE, SE	moderate
Laguncularia racemosa	white mangrove	high	SW, SE, Keys	moist - moderate
Magnolia grandiflora	southern magnolia	moderate	NW, SW, NE	moderate
Persea borbonia	redbay	moderate	NW, SW, NE, SE	moderate

Exhibit D.

Scientific Name	Common Name	Salt tolerance	Region (NW/SW/NE/SE/Keys)	Soil Moisture
<b>Trees continued</b>				
<i>Persea humilis</i>	silkbay	moderate	SW, NE, SE	moderate - dry
<i>Pinus clausa</i>	sand pine	moderate	NW, SW, NE, SE	dry
<i>Pinus elliottii</i>	slash pine	moderate	NW, SW, NE, SE, Keys	moist - moderate
<i>Quercus geminata</i>	sand live oak	moderate	NW, SW, NE, SE	moderate - dry
<i>Quercus virginiana</i>	live oak	moderate	NW, SW, NE, SE, Keys	moderate - dry
<i>Sideroxylon foetidissimum</i>	mastic	moderate	SW, SE, Keys	moderate
<b>Palms</b>				
<i>Acoelorrhapha wrightii</i>	paurotis palm	moderate	SW, SE, Keys	moist - moderate
<i>Coccothrinax argentata</i>	silver palm	high	SE, Keys	dry
<i>Sabal palmetto</i>	cabbage palm	high	all	moist - moderate
<i>Serenoa repens</i>	saw palmetto	high	all	moist - dry
<i>Thrinax morrissii</i>	brittle thatch palm	moderate	Keys	dry
<i>Thrinax radiata</i>	Florida thatch palm	moderate	Keys	dry

**Fritz Wettstein**  
**Coastal Construction Control Line Program**  
**Division of Water Resource Management**  
**Florida Department of Environmental Protection**  
**2600 Blair Stone Road, Mail Station 3522**  
**Tallahassee, Florida 32399**  
**850/245-7672**  
[john.wettstein@dep.state.fl.us](mailto:john.wettstein@dep.state.fl.us)  
[www.floridadep.org/beaches](http://www.floridadep.org/beaches)